

bs-13494R**[Primary Antibody]****Bioss**
ANTIBODIES

www.bioss.com.cn

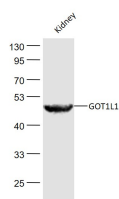
sales@bioss.com.cn

techsupport@bioss.com.cn

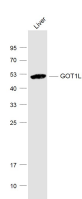
400-901-9800

GOT1L1 Rabbit pAb**— DATASHEET —**

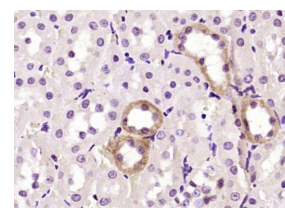
Host: Rabbit	Isotype: IgG	Applications: WB (1:500-2000) IHC-P (1:100-500) IHC-F (1:100-500) IF (1:100-500) Reactivity: Mouse, Rat (predicted: Human, Rabbit, Pig, Sheep, Cow, Horse) Predicted MW.: 47 kDa Subcellular Location: Cytoplasm
Clonality: Polyclonal		
GeneID: 137362	SWISS: Q8NHS2	
Target: GOT1L1		
Immunogen: KLH conjugated synthetic peptide derived from human GOT1L1: 201-300/421.		
Purification: affinity purified by Protein A		
Concentration: 1mg/ml		
Storage: 0.01M TBS (pH7.4) with 1% BSA, 0.02% Proclin300 and 50% Glycerol. Shipped at 4°C. Store at -20°C for one year. Avoid repeated freeze/thaw cycles.		
Background: GOT1L1, Glutamate oxaloacetate transaminase 1-like protein 1, is a 421 amino acid member of the class-I pyridoxal-phosphate-dependent aminotransferase family. Similar to glutamate-oxaloacetate transaminase (GOT1), GOT1L1 is found primarily as a homodimer in the cytoplasmic space but also has mitochondrial and chloroplastic isozymes. GOT1L1 transaminates 2-oxoglutarate with L-aspartate to yield oxaloacetate and L-glutamate. This reaction requires a pyridoxal phosphate cofactor to occur. The GOT1L1 peptidase is predominately expressed in the liver and serum levels of this protein can be used as an indicator of liver disease. Also, elevated glutamate concentrations in the brain interstitial fluids can lead to pathological brain conditions. The glutamate-scavenging properties of these aminotranferase type enzymes likely prevent glutamate excitotoxicity and the long-lasting neurological deficits seen after stroke.		

— VALIDATION IMAGES —

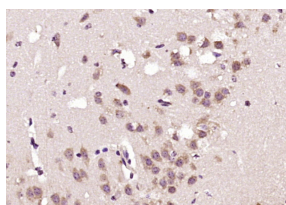
Sample: Kidney (Mouse) Lysate at 40 ug Primary:
Anti- GOT1L1 (bs-13494R) at 1/1000 dilution
Secondary: IRDye800CW Goat Anti-Rabbit IgG at
1/20000 dilution Predicted band size: 47 kD
Observed band size: 47 kD



Sample: Liver (Mouse) Lysate at 40 ug Primary:
Anti- GOT1L1 (bs-13494R) at 1/1000 dilution
Secondary: IRDye800CW Goat Anti-Rabbit IgG at
1/20000 dilution Predicted band size: 47 kD
Observed band size: 47 kD



Paraformaldehyde-fixed, paraffin embedded (rat kidney); Antigen retrieval by boiling in sodium citrate buffer (pH6.0) for 15min; Block endogenous peroxidase by 3% hydrogen peroxide for 20 minutes; Blocking buffer (normal goat serum) at 37°C for 30min; Antibody incubation with (GOT1L1) Polyclonal Antibody, Unconjugated (bs-13494R) at 1:200 overnight at 4°C, followed by operating according to SP Kit(Rabbit) (sp-0023) instructions and DAB staining.



Important Note: This product as supplied is intended for research use only, not for use in human, therapeutic or diagnostic applications.

Paraformaldehyde-fixed, paraffin embedded (mouse brain); Antigen retrieval by boiling in sodium citrate buffer (pH6.0) for 15min; Block endogenous peroxidase by 3% hydrogen peroxide for 20 minutes; Blocking buffer (normal goat serum) at 37°C for 30min; Antibody incubation with (GOT1L1) Polyclonal Antibody, Unconjugated (bs-13494R) at 1:200 overnight at 4°C, followed by operating according to SP Kit(Rabbit) (sp-0023) instructions and DAB staining.