

bs-13488R**[Primary Antibody]****GOLPH3 Rabbit pAb****BioSS**
ANTIBODIES

www.bioss.com.cn

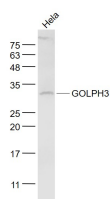
sales@bioss.com.cn

techsupport@bioss.com.cn

400-901-9800

— DATASHEET —

Host: Rabbit	Isotype: IgG	Applications: WB (1:500-2000)
Clonality: Polyclonal		Reactivity: Human (predicted: Mouse, Rat, Cow, Chicken, Dog, Horse)
GeneID: 64083	SWISS: Q9H4A6	Predicted MW.: 34 kDa
Target: GOLPH3		Subcellular Location: Cell membrane ,Cytoplasm
Immunogen: KLH conjugated synthetic peptide derived from human GOLPH3: 51-150/298.		
Purification: affinity purified by Protein A		
Concentration: 1mg/ml		
Storage: 0.01M TBS (pH7.4) with 1% BSA, 0.02% Proclin300 and 50% Glycerol. Shipped at 4°C. Store at -20°C for one year. Avoid repeated freeze/thaw cycles.		
Background: The Golgi complex plays a key role in the sorting and modification of proteins exported from the endoplasmic reticulum. GOLPH3L (golgi phosphoprotein 3-like), also known as GPP34R, is a 285 amino acid cytoplasmic protein that localizes to the Golgi apparatus. Belonging to the GOLPH3/VPS74 family, GOLPH3L may have a regulatory role in Golgi trafficking. GOLPH3L is encoded by a gene located on human chromosome 1, which spans 260 million base pairs, contains over 3,000 genes and comprises nearly 8% of the human genome. Chromosome 1 houses a large number of disease-associated genes, including those that are involved in familial adenomatous polyposis, Stickler syndrome, Parkinson's disease, Gaucher disease, schizophrenia and Usher syndrome. Aberrations in chromosome 1 are found in a variety of cancers, including head and neck cancer, malignant melanoma and multiple myeloma.		

— VALIDATION IMAGES —

Sample: HeLa(Human) Cell Lysate at 30 ug
Primary: Anti- GOLPH3 (bs-13488R) at 1/1000
dilution Secondary: IRDye800CW Goat Anti-
Rabbit IgG at 1/20000 dilution Predicted band
size: 34 kD Observed band size: 33 kD

— SELECTED CITATIONS —

- **[IF=4.9]** Jingni Li. et al. Selenium alleviates cadmium-induced Golgi stress via HSPB7/GM130/CX-43 axis in the heart of sheep. J NUTR BIOCHEM. 2025 Jun;;109993 WB ;Sheep. 40490057