

[Primary Antibody]



BioSS
ANTIBODIES

www.bioss.com.cn

sales@bioass.com.cn

techsupport@bioss.com.cn

400-901-9800

— DATASHEET

Host: Rabbit

Clonality: Recombinant

GeneID: 9978

Target: RBX1

Immunogen: A synthesized peptide derived from human RBX1: 60-108/108.

Purification: affinity purified by Protein A

Concentration: 1mg/ml

Storage: 0.01M TBS (pH7.4) with 1% BSA, 0.02% Proclin300 and 50% Glycerol.
Shipped at 4°C. Store at -20°C for one year. Avoid repeated freeze/thaw cycles.

Background: This locus encodes a RING finger-like domain-containing protein. The encoded protein interacts with cullin proteins and likely plays a role in ubiquitination processes necessary for cell cycle progression. This protein may also affect protein turnover. Related pseudogenes exist on chromosomes 2 and 5.[provided by RefSeq, Sep 2010]

Isotype: IgG

CloneNo.: R2D3

SWISS: P62877

Applications: WB (1:500-2000)

IHC-P (1:100-500)

IHC-F (1:100-500)

IF (1:100-500)

Flow-Cyt (1:50-100)

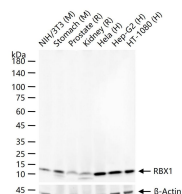
ICC/IF (1:50-200)

Reactivity: Human, Mouse, Rat

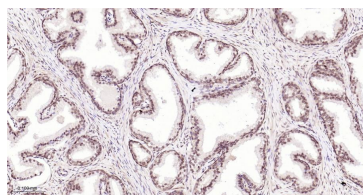
Predicted MW.: 12 kDa

Subcellular Location: Cytoplasm ,Nucleus

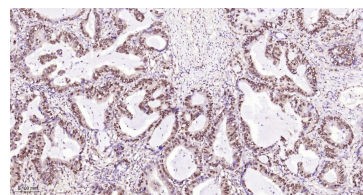
— VALIDATION IMAGES



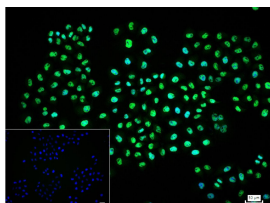
25 µg total protein per lane of various lysates (see on figure) probed with RBX1 monoclonal antibody, unconjugated (bsm-60704R) at 1:1000 dilution and 4°C overnight incubation. Followed by conjugated secondary antibody incubation at r.t. for 60 min.



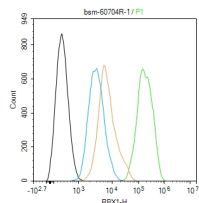
Paraformaldehyde-fixed, paraffin embedded Human Prostate; Antigen retrieval by boiling in sodium citrate buffer (pH6.0) for 15 min; The section was incubated with RBX1 Monoclonal Antibody, Unconjugated (bsm-60704R) at 1:200 overnight at 4°C, followed by conjugation to the bs-0295G-HRP and DAB (C-0010) staining.



Paraformaldehyde-fixed, paraffin embedded Human Lung Cancer; Antigen retrieval by boiling in sodium citrate buffer (pH6.0) for 15 min; The section was incubated with RBX1 Monoclonal Antibody, Unconjugated (bsm-60704R) at 1:200 overnight at 4°C, followed by conjugation to the bs-0295G-HRP and DAB (C-0010) staining.



4% Paraformaldehyde-fixed Hela (H) cell; Triton X-100 at r.t. for 20 min; Antibody incubation with (RBX1) monoclonal Antibody, unconjugated (bsm-60704R) 1:100, 90 min at 37°C; followed by conjugated Goat Anti-Rabbit IgG antibody (green, bs-60295G-BF488) at 37°C for 90 min, DAPI (blue, C02-04002) was used to stain the cell nuclei. PBS instead of the primary antibody was used as the blank control.



The Hela (H) cells were fixed with 4% PFA (10 min at r.t.) and then permeabilized with 90% ice-cold methanol for 20 min at -20°C, the cells then were incubated in 5% BSA to block non-specific protein-protein interactions (30 min at r.t.). Primary Antibody (green): Rabbit Anti-RBX1 antibody (bsm-60704R, 1:100); Secondary Antibody (white blue): Goat anti-Rabbit IgG-BF488 (bs-0295G-BF488): 1 µg/test. Isotype Control (orange): Rabbit IgG (bs-0295P). Blank control (black): PBS. Acquisition of 20,000 events was performed.

Important Note: This product as supplied is intended for research use only, not for use in human, therapeutic or diagnostic applications.