

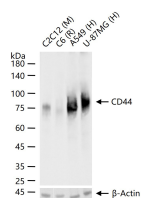
**bsm-54767R****[ Primary Antibody ]****Bioss**  
ANTIBODIES

www.bioss.com.cn

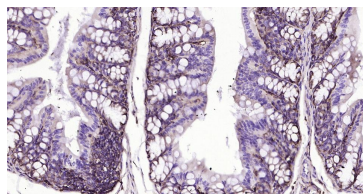
sales@bioss.com.cn

techsupport@bioss.com.cn

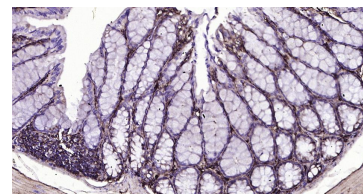
400-901-9800

**CD44 Recombinant Rabbit mAb****— DATASHEET —****Host:** Rabbit**Clonality:** Recombinant**GeneID:** 960**Target:** CD44**Immunogen:** A synthesized peptide derived from human CD44: 1-250.**Purification:** affinity purified by Protein A**Concentration:** 1mg/ml**Storage:** 1\*TBS (pH7.4), 0.05% BSA, 40% Glycerol. Preservative: 0.02% Proclin300.  
Shipped at 4°C. Store at -20°C for one year. Avoid repeated freeze/thaw cycles.**Background:** The protein encoded by this gene is a cell-surface glycoprotein involved in cell-cell interactions, cell adhesion and migration. It is a receptor for hyaluronic acid (HA) and can also interact with other ligands, such as osteopontin, collagens, and matrix metalloproteinases (MMPs). This protein participates in a wide variety of cellular functions including lymphocyte activation, recirculation and homing, hematopoiesis, and tumor metastasis. Transcripts for this gene undergo complex alternative splicing that results in many functionally distinct isoforms, however, the full length nature of some of these variants has not been determined. Alternative splicing is the basis for the structural and functional diversity of this protein, and may be related to tumor metastasis. [provided by RefSeq, Jul 2008].**Isotype:** IgG**CloneNo.:** 2D13**SWISS:** P16070**Applications:** **WB** (1:500-2000)  
**IHC-P** (1:100-500)  
**IHC-F** (1:100-500)  
**IF** (1:100-500)  
**Flow-Cyt** (1:20-50)  
**ICC/IF** (1:50-200)**Reactivity:** Human, Mouse, Rat**Predicted MW.:** 85 kDa**Subcellular Location:** Cell membrane**— VALIDATION IMAGES —**

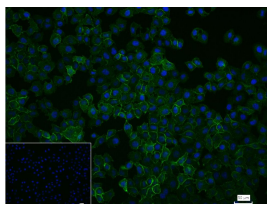
25 ug total protein per lane of various lysates (see on figure) probed with CD44 monoclonal antibody, unconjugated (bsm-54767R) at 1:1000 dilution and 4°C overnight incubation. Followed by conjugated secondary antibody incubation at r.t. for 60 min.



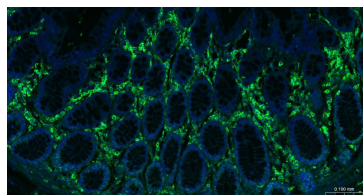
Paraformaldehyde-fixed, paraffin embedded Rat Colon; Antigen retrieval by boiling in sodium citrate buffer (pH6.0) for 15 min; Antibody incubation with CD44 Monoclonal Antibody, Unconjugated (bsm-54767R) at 1:200 overnight at 4°C, followed by conjugation to the bs-0295G-HRP and DAB (C-0010) staining.



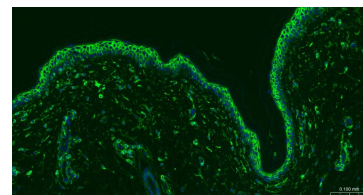
Paraformaldehyde-fixed, paraffin embedded Mouse Colon; Antigen retrieval by boiling in sodium citrate buffer (pH6.0) for 15 min; Antibody incubation with CD44 Monoclonal Antibody, Unconjugated (bsm-54767R) at 1:200 overnight at 4°C, followed by conjugation to the bs-0295G-HRP and DAB (C-0010) staining.



4% Paraformaldehyde-fixed Hela (H) cell; Triton X-100 at r.t. for 20 min; Antibody incubation with (CD44) monoclonal Antibody, unconjugated (bsm-54767R) 1:100, 90 min at 37°C; followed by conjugated Goat Anti-Rabbit IgG antibody (green, bs-40295G-FITC) at 37°C for 90 min, DAPI



Paraformaldehyde-fixed, paraffin embedded Human Colon; Antigen retrieval by boiling in sodium citrate buffer (pH6.0) for 15 min; The section was incubated with CD44 Monoclonal Antibody, Unconjugated (bsm-54767R) at 1:200 overnight at 4°C. Followed by conjugated Goat



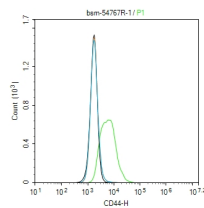
Paraformaldehyde-fixed, paraffin embedded Human Abdominal skin; Antigen retrieval by boiling in sodium citrate buffer (pH6.0) for 15 min; The section was incubated with CD44 Monoclonal Antibody, Unconjugated (bsm-54767R) at 1:200 overnight at 4°C.

Important Note: This product as supplied is intended for research use only, not for use in human, therapeutic or diagnostic applications.

(blue, C02-04002) was used to stain the cell nuclei. PBS instead of the primary antibody was used as the blank control.

Anti-Ratbbit IgG antibody (green, bs-0295G-BF488), DAPI (blue, C02-04002) was used to stain the cell nuclei.

Followed by conjugated Goat Anti-Ratbbit IgG antibody (green, bs-0295G-BF488), DAPI (blue, C02-04002) was used to stain the cell nuclei.



The Hela (H) cells were incubated in 5%BSA to block non-specific protein-protein interactions (30 min at r.t.). Primary Antibody (green): Rabbit Anti-CD44 antibody (bsm-54767R): 1  $\mu$ g/ $10^6$  cells; Secondary Antibody (white blue): Goat anti-Rabbit IgG-FITC (bs-40295G-FITC): 1  $\mu$ g/test. Isotype Control (orange): Rabbit IgG (bs-0295P). Blank control (black): PBS. Acquisition of 20,000 events was performed.

## — SELECTED CITATIONS —

- **[IF=3.8]** Wang Chunjing. et al. Genetically engineered BMSCs promote dopamine secretion and ameliorate motor dysfunction in a Parkinson' s disease rat model. SCI REP-UK. 2025 Apr;15(1):1-15 IHC,FC ;Rat. 40217082