

bs-11950R**[Primary Antibody]****SHISA9 Rabbit pAb****Bioss**
ANTIBODIES

www.bioss.com.cn

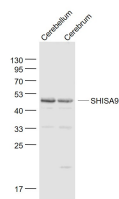
sales@bioss.com.cn

techsupport@bioss.com.cn

400-901-9800

— DATASHEET —

Host: Rabbit	Isotype: IgG	Applications: WB (1:500-2000)
Clonality: Polyclonal		Reactivity: Mouse (predicted: Human, Rat, Rabbit, Sheep, Cow, Dog, Horse)
GeneID: 729993	SWISS: B4DS77	
Target: SHISA9		Predicted MW.: 44 kDa
Immunogen: KLH conjugated synthetic peptide derived from human SHISA9: 251-350/424.		Subcellular Location: Cell membrane
Purification: affinity purified by Protein A		
Concentration: 1mg/ml		
Storage: 0.01M TBS (pH7.4) with 1% BSA, 0.02% Proclin300 and 50% Glycerol. Shipped at 4°C. Store at -20°C for one year. Avoid repeated freeze/thaw cycles.		
Background: Regulator of short-term neuronal synaptic plasticity in the dentate gyrus. Associates with AMPA receptors (ionotropic glutamate receptors) in synaptic spines and promotes AMPA receptor desensitization at excitatory synapses.		

— VALIDATION IMAGES —

Sample: Cerebellum (Mouse) Lysate at 40 ug
Cerebrum (Mouse) Lysate at 40 ug Primary: Anti-SHISA9 (bs-11950R) at 1/1000 dilution
Secondary: IRDye800CW Goat Anti-Rabbit IgG at 1/20000 dilution Predicted band size: 44 kD
Observed band size: 44 kD