

bsm-60694R**[Primary Antibody]****BioSS**
ANTIBODIES

www.bioss.com.cn

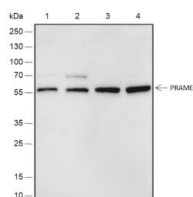
sales@bioss.com.cn

techsupport@bioss.com.cn

400-901-9800

PRAME Recombinant Rabbit mAb**— DATASHEET —**

Host: Rabbit	Isotype: IgG	Applications: WB (1:500-1000)
Clonality: Recombinant	CloneNo.: R1D8	Reactivity: Human
GeneID: 23532	SWISS: P78395	
Target: PRAME		
Purification: affinity purified by Protein A		
Concentration: 1mg/ml		Predicted MW.: 56 kDa
Storage: 0.01M TBS (pH7.4) with 1% BSA, 0.02% Proclin300 and 50% Glycerol. Shipped at 4°C. Store at -20°C for one year. Avoid repeated freeze/thaw cycles.		Subcellular Location: Cell membrane ,Nucleus
Background: This gene encodes an antigen that is predominantly expressed in human melanomas and that is recognized by cytolytic T lymphocytes. It is not expressed in normal tissues, except testis. This expression pattern is similar to that of other CT antigens, such as MAGE, BAGE and GAGE. However, unlike these other CT antigens, this gene is also expressed in acute leukemias. Five alternatively spliced transcript variants encoding the same protein have been observed for this gene. [provided by RefSeq, Jul 2008]		

— VALIDATION IMAGES —

Blocking buffer: 5% NFDM/TBST Primary Ab
dilution: 1:1000 Primary Ab incubation
condition: 4°C overnight Secondary Ab: Goat
Anti-Rabbit IgG H&L (HRP) Lysate: 1: Ramos, 2:
K562, 3: HeLa, 4: A375 Protein loading quantity:
20 µg Exposure time: 60 s Predicted MW: 58 kDa
Observed MW: 58 kDa