

bs-23297R**[Primary Antibody]****GAS2L3 Rabbit pAb****BioSS**
ANTIBODIES

www.bioss.com.cn

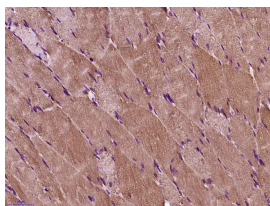
sales@bioss.com.cn

techsupport@bioss.com.cn

400-901-9800

— DATASHEET —

Host: Rabbit	Isotype: IgG	Applications: IHC-P (1:100-500) IHC-F (1:100-500) IF (1:100-500)
Clonality: Polyclonal		
GeneID: 283431	SWISS: Q86XJ1	
Target: GAS2L3		Reactivity: Rat (predicted: Human, Mouse, Rabbit, Dog)
Immunogen: KLH conjugated synthetic peptide derived from human GAS2L3: 251-350/694.		
Purification: affinity purified by Protein A		Predicted MW.: 75 kDa
Concentration: 1mg/ml		Subcellular Location: Cytoplasm
Storage: 0.01M TBS (pH7.4) with 1% BSA, 0.02% Proclin300 and 50% Glycerol. Shipped at 4°C. Store at -20°C for one year. Avoid repeated freeze/thaw cycles.		
Background: GAS2L3 (Growth arrest-specific 2 like 3) a member of the GAS2 family, is similar in sequence to the mouse protein GAS2, an actin-associated protein expressed at high levels in growth-arrested cells. The specific function of this protein is unknown.		

— VALIDATION IMAGES —

Paraformaldehyde-fixed, paraffin embedded (Rat skeletal muscle); Antigen retrieval by boiling in sodium citrate buffer (pH6.0) for 15min; Block endogenous peroxidase by 3% hydrogen peroxide for 20 minutes; Blocking buffer (normal goat serum) at 37°C for 30min; Antibody incubation with (GAS2L3) Polyclonal Antibody, Unconjugated (bs-23297R) at 1:400 overnight at 4°C, followed by operating according to SP Kit(Rabbit) (sp-0023) instructions and DAB staining.

— SELECTED CITATIONS —

- **[IF=3.258]** Yan Zhou. et al. Elevated GAS2L3 Expression Correlates With Poor Prognosis in Patients With Glioma: A Study Based on Bioinformatics and Immunohistochemical Analysis. Front Genet. 2021; 12: 649270 IHC ;Human. 33859674