

**bsm-60692R****[ Primary Antibody ]****BioSS**  
ANTIBODIES

www.bioss.com.cn

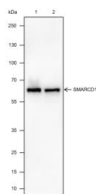
sales@bioss.com.cn

techsupport@bioss.com.cn

400-901-9800

**SMARCD1 Recombinant Rabbit mAb****— DATASHEET —**

<b>Host:</b> Rabbit	<b>Isotype:</b> IgG	<b>Applications:</b> WB (1:500-2000)  <b>Reactivity:</b> Human (predicted: Mouse)   <b>Predicted MW.:</b> 58 kDa  <b>Subcellular Location:</b> Nucleus
<b>Clonality:</b> Recombinant	<b>CloneNo.:</b> R1C5	
<b>GeneID:</b> 6602	<b>SWISS:</b> Q96GM5	
<b>Target:</b> SMARCD1		
<b>Purification:</b> affinity purified by Protein A		
<b>Concentration:</b> 1mg/ml		
<b>Storage:</b> 0.01M TBS (pH7.4) with 1% BSA, 0.02% Proclin300 and 50% Glycerol. Shipped at 4°C. Store at -20°C for one year. Avoid repeated freeze/thaw cycles.		
<b>Background:</b> The protein encoded by this gene is a member of the SWI/SNF family of proteins, whose members display helicase and ATPase activities and which are thought to regulate transcription of certain genes by altering the chromatin structure around those genes. The encoded protein is part of the large ATP-dependent chromatin remodeling complex SNF/SWI and has sequence similarity to the yeast Swp73 protein. Two transcript variants encoding different isoforms have been found for this gene. [provided by RefSeq, Jul 2008]		

**— VALIDATION IMAGES —**

Blocking buffer: 5% NFDm/TBST Primary Ab  
dilution: 1:1000 Primary Ab incubation  
condition: 2 hours at room temperature  
Secondary Ab: Goat Anti-Rabbit IgG H&L (HRP)  
Lysate: 1: Neuro-2a, 2: Jurkat Protein loading  
quantity: 20 µg Exposure time: 30 s Predicted  
MW: 58 kDa Observed MW: 58 kDa