

bs-5478R**[Primary Antibody]****phospho-MYL6 (Tyr29+Ser30) Rabbit pAb****Bioss**
ANTIBODIES

www.bioss.com.cn

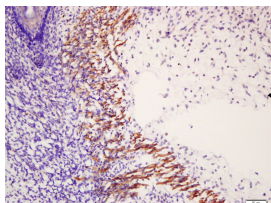
sales@bioss.com.cn

techsupport@bioss.com.cn

400-901-9800

— DATASHEET —

Host: Rabbit	Isotype: IgG	Applications: IHC-P (1:100-500) IHC-F (1:100-500) IF (1:100-500) Reactivity: Mouse (predicted: Human, Rat, Pig, Sheep, Chicken) Predicted MW.: 17 kDa Subcellular Location: Cytoplasm ,Nucleus
Clonality: Polyclonal		
GeneID: 4637	SWISS: P60660	
Target: MYL6 (Tyr29+Ser30)		
Immunogen: KLH conjugated Synthesised phosphopeptide derived from human MYL6 around the phosphorylation site of Tyr29+Ser30: IL(p-Y)(p-S)Q-NH2.		
Purification: affinity purified by Protein A		
Concentration: 1mg/ml		
Storage: 0.01M TBS (pH7.4) with 1% BSA, 0.02% Proclin300 and 50% Glycerol. Shipped at 4°C. Store at -20°C for one year. Avoid repeated freeze/thaw cycles.		
Background: Myosin is a hexameric ATPase cellular motor protein. It is composed of two heavy chains, two nonphosphorylatable alkali light chains, and two phosphorylatable regulatory light chains. This gene encodes a myosin alkali light chain that is expressed in smooth muscle and non-muscle tissues. Genomic sequences representing several pseudogenes have been described and two transcript variants encoding different isoforms have been identified for this gene.		

— VALIDATION IMAGES —

Tissue/cell: muscle of mouse embryo; 4% Paraformaldehyde-fixed and paraffin-embedded; Antigen retrieval: citrate buffer (0.01M, pH 6.0), Boiling bathing for 15min; Block endogenous peroxidase by 3% Hydrogen peroxide for 30min; Blocking buffer (normal goat serum, C-0005) at 37°C for 20 min; Incubation: Anti-phospho-MYL6(Tyr29+Ser30) Polyclonal Antibody, Unconjugated(bs-5478R) 1:200, overnight at 4°C, followed by conjugation to the secondary antibody(SP-0023) and DAB(C-0010) staining