

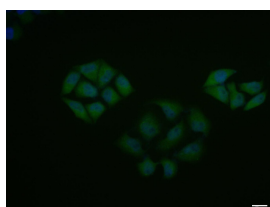
bs-3234R**[Primary Antibody]****phospho-IKK alpha (Tyr463) Rabbit pAb****BioSS**
ANTIBODIES

www.bioss.com.cn

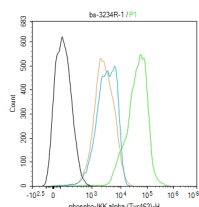
sales@bioss.com.cn

techsupport@bioss.com.cn

400-901-9800

— DATASHEET —**Host:** Rabbit**Isotype:** IgG**Clonality:** Polyclonal**GeneID:** 1147**SWISS:** O15111**Target:** IKK alpha (Tyr463)**Immunogen:** KLH conjugated Synthesised phosphopeptide derived from human IKK alpha around the phosphorylation site of Tyr463: NL(p-T)KM.**Purification:** affinity purified by Protein A**Concentration:** 1mg/ml**Storage:** 0.01M TBS (pH7.4) with 1% BSA, 0.02% Proclin300 and 50% Glycerol.
Shipped at 4°C. Store at -20°C for one year. Avoid repeated freeze/thaw cycles.**Background:** Nuclear factor kappa B (NFkB) is a ubiquitous transcription factor and an essential mediator of gene expression during activation of immune and inflammatory responses. NFkB mediates the expression of a great variety of genes in response to extracellular stimuli including IL1, TNF alpha, and bacterial product LPS. NFkB is associated with Ikb proteins in the cell cytoplasm, which inhibit NFkB activity. IKK is a serine protein kinase, and the IKK complex contains alpha and beta subunits (IKK alpha and IKK beta). IKK alpha and IKK beta interact with each other and both are essential for NFkB activation. IKK alpha specifically phosphorylates Ikbα. IKKα is expressed in variety of human tissues.**Applications:** **Flow-Cyt** (1ug/Test)
ICC/IF (1:100)**Reactivity:** Human (predicted: Mouse, Rat, Rabbit, Pig, Sheep, Cow, Chicken, Dog, GuineaPig, Horse)**Predicted MW.:** 85 kDa**Subcellular Location:** Cytoplasm ,Nucleus**— VALIDATION IMAGES —**

Hela cell; 4% Paraformaldehyde-fixed; Triton X-100 at room temperature for 20 min; Blocking buffer (normal goat serum, C-0005) at 37°C for 20 min; Antibody incubation with (phospho-IKK alpha (Tyr463)) polyclonal Antibody, Unconjugated (bs-3234R) 1:100, 90 minutes at 37°C; followed by a conjugated Goat Anti-Rabbit IgG antibody at 37°C for 90 minutes, DAPI (blue, C02-04002) was used to stain the cell nuclei.



Blank control (black line) :U251. Primary Antibody (green line): Rabbit Anti-phospho-IKK alpha (Tyr463) antibody (bs-3234R) Dilution:1ug/Test; Secondary Antibody (white blue line) : Goat anti-rabbit IgG-AF488 Dilution: 0.5ug/Test. Isotype control (orange line) : Normal Rabbit IgG Protocol The cells were fixed with 4% PFA (10min at room temperature)and then permeabilized with 90% ice-cold methanol for 20 min at -20°C, The cells were then incubated in 5%BSA to block non-specific protein-protein interactions for 30 min at room temperature .Cells stained with Primary Antibody for 30 min at room temperature. The secondary antibody used for 40 min at room temperature. Acquisition of 20,000 events was performed.