

phospho-MEF2C (Thr300) Rabbit pAb

Catalog Number: bs-5483R

Target Protein: phospho-MEF2C (Thr300)

Concentration: 1mg/ml

Form: Liquid

Host: Rabbit

Clonality: Polyclonal

Isotype: IgG

Applications: WB (1:500-2000)

Reactivity: Mouse, Rat (predicted:Human, Rabbit, Pig, Cow, Chicken, Dog)

Predicted MW: 51 kDa

Entrez Gene: 4208

Swiss Prot: Q06413

Source: KLH conjugated Synthesised phosphopeptide derived from human MEF2C around the phosphorylation site of Thr300: VA(p-T)PT.

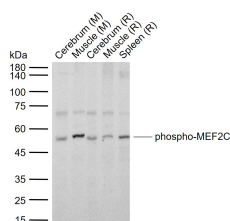
Purification: affinity purified by Protein A

Storage: 0.01M TBS (pH7.4) with 1% BSA, 0.02% Proclin300 and 50% Glycerol.

Shipped at 4°C. Store at -20°C for one year. Avoid repeated freeze/thaw cycles.

Background: MEF2C is a transcription activator which binds specifically to the MEF2 element present in the regulatory regions of many muscle-specific genes. This protein controls cardiac morphogenesis and myogenesis, and is also involved in vascular development. It may also be involved in neurogenesis and in the development of cortical architecture.

VALIDATION IMAGES



Sample: Lane 1: Mouse Cerebrum tissue lysates Lane 2: Mouse Muscle tissue lysates Lane 3: Rat Cerebrum tissue lysates Lane 4: Rat Muscle tissue lysates Lane 5: Rat Spleen tissue lysates Primary: Anti-phospho-MEF2C (Thr300) (bs-5483R) at 1/1000 dilution Secondary: IRDye800CW Goat Anti-Rabbit IgG at 1/20000 dilution Predicted band size: 51 kDa Observed band size: 53 kDa