

bsm-60652R**[Primary Antibody]****BioSS**
ANTIBODIES

www.bioss.com.cn

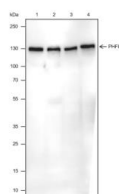
sales@bioss.com.cn

techsupport@bioss.com.cn

400-901-9800

PHF8 Recombinant Rabbit mAb**— DATASHEET —**

Host: Rabbit	Isotype: IgG	Applications: WB (1:500-2000) Reactivity: Human (predicted: Mouse, Rat) Predicted MW.: 118 kDa Subcellular Location: Nucleus
Clonality: Recombinant	CloneNo.: R4H8	
GeneID: 23133	SWISS: Q9UPP1	
Target: PHF8		
Purification: affinity purified by Protein A		
Concentration: 1mg/ml		
Storage: 0.01M TBS (pH7.4) with 1% BSA, 0.02% Proclin300 and 50% Glycerol. Shipped at 4°C. Store at -20°C for one year. Avoid repeated freeze/thaw cycles.		
Background: The protein encoded by this gene is a histone lysine demethylase that preferentially acts on histones in the monomethyl or dimethyl states. The encoded protein requires Fe(2+) ion, 2-oxoglutarate, and oxygen for its catalytic activity. The protein has an N-terminal PHD finger and a central Jumonji C domain. This gene is thought to function as a transcription activator. Defects in this gene are a cause of syndromic X-linked Siderius type intellectual disability (MRXSSD) and over-expression of this gene is associated with several forms of cancer. Multiple transcript variants encoding different isoforms have been found for this gene. [provided by RefSeq, Jul 2017]		

— VALIDATION IMAGES —

Blocking buffer: 5% NFDm/TBST Primary Ab
dilution: 1:1000 Primary Ab incubation
condition: 2 hours at room temperature
Secondary Ab: Goat Anti-Rabbit IgG H&L (HRP)
Lysate: 1: HeLa, 2: HEK-293, 3: NIH/3T3, 4: PC-12
Protein loading quantity: 20 µg Exposure time:
60 s Predicted MW: 118 kDa Observed MW: 140
kDa