

bs-12666R

[Primary Antibody]

TMEM87A Rabbit pAb

Bioss
ANTIBODIES

www.bioss.com.cn

sales@bioss.com.cn

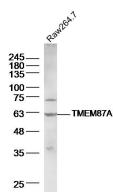
techsupport@bioss.com.cn

400-901-9800

— DATASHEET —

Host: Rabbit	Isotype: IgG	Applications: WB (1:500-2000)
Clonality: Polyclonal		Reactivity: Mouse (predicted: Human, Rat, Rabbit, Pig, Sheep, Cow, Chicken, Dog, Horse)
GeneID: 25963	SWISS: Q8NBN3	
Target: TMEM87A		Predicted MW.: 61 kDa
Immunogen: KLH conjugated synthetic peptide derived from human TMEM87A: 431-530/555.		Subcellular Location: Cell membrane
Purification: affinity purified by Protein A		
Concentration: 1mg/ml		
Storage: 0.01M TBS (pH7.4) with 1% BSA, 0.02% Proclin300 and 50% Glycerol. Shipped at 4°C. Store at -20°C for one year. Avoid repeated freeze/thaw cycles.		

— VALIDATION IMAGES —



Sample: Raw264.7(Mouse) Cell Lysate at 40 ug
Primary: Anti-TMEM87A (bs-12666R) at 1/300
dilution Secondary: IRDye800CW Goat Anti-
Rabbit IgG at 1/20000 dilution Predicted band
size: 61 kD Observed band size: 61 kD