

## SPATA21 Rabbit pAb

Catalog Number: bs-17626R

Target Protein: SPATA21

Concentration: 1mg/ml

Form: Liquid

Host: Rabbit

Clonality: Polyclonal

Isotype: IgG

Applications: WB (1:500-2000)

Reactivity: Mouse (predicted:Human, Rat, Horse)

Predicted MW: 52 kDa

Entrez Gene: 374955

Swiss Prot: Q7Z572

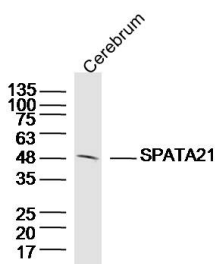
Source: KLH conjugated synthetic peptide derived from human SPATA21: 181-280/469.

Purification: affinity purified by Protein A

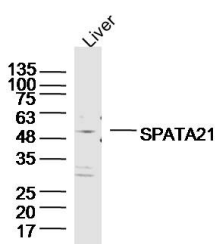
Storage: 0.01M TBS (pH7.4) with 1% BSA, 0.02% Proclin300 and 50% Glycerol.

Shipped at 4°C. Store at -20°C for one year. Avoid repeated freeze/thaw cycles.

### VALIDATION IMAGES



Sample: Cerebrum (Mouse) Lysate at 40 ug Primary: Anti-SPATA21(bs-17626R)at 1/300 dilution Secondary: IRDye800CW Goat Anti-Rabbit IgG at 1/20000 dilution Predicted band size: 52kD Observed band size: 50kD



Sample: Liver (Mouse) Lysate at 40 ug Primary: Anti-SPATA21(bs-17626R)at 1/300 dilution Secondary: IRDye800CW Goat Anti-Rabbit IgG at 1/20000 dilution Predicted band size: 52kD Observed band size: 52kD