

bsm-60687R**[Primary Antibody]****Bioss**
ANTIBODIES

www.bioss.com.cn

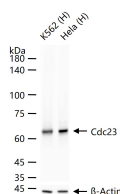
sales@bioss.com.cn

techsupport@bioss.com.cn

400-901-9800

Cdc23 Recombinant Rabbit mAb**— DATASHEET —**

Host: Rabbit	Isotype: IgG	Applications: WB (1:500-2000) ICC/IF (1:50-200) Reactivity: Human (predicted: Mouse, Rat) Predicted MW.: 69 kDa Subcellular Location: Cytoplasm ,Nucleus
Clonality: Recombinant	CloneNo.: R4G5	
GeneID: 8697	SWISS: Q9UJX2	
Target: Cdc23		
Immunogen: A synthesized peptide derived from human CDC23: 510-575.		
Purification: affinity purified by Protein A		
Concentration: 1mg/ml		
Storage: 0.01M TBS (pH7.4) with 1% BSA, 0.02% Proclin300 and 50% Glycerol. Shipped at 4°C. Store at -20°C for one year. Avoid repeated freeze/thaw cycles.		
Background: The protein encoded by this gene shares strong similarity with <i>Saccharomyces cerevisiae</i> Cdc23, a protein essential for cell cycle progression through the G2/M transition. This protein is a component of anaphase-promoting complex (APC), which is composed of eight protein subunits and highly conserved in eukaryotic cells. APC catalyzes the formation of cyclin B-ubiquitin conjugate that is responsible for the ubiquitin-mediated proteolysis of B-type cyclins. This protein and 3 other members of the APC complex contain the TPR (tetratricopeptide repeat), a protein domain important for protein-protein interaction. [provided by RefSeq, Jul 2008]		

— VALIDATION IMAGES —

25 ug total protein per lane of various lysates (see on figure) probed with Cdc23 monoclonal antibody, unconjugated (bsm-60687R) at 1:1000 dilution and 4°C overnight incubation. Followed by conjugated secondary antibody incubation at r.t. for 60 min.