

bs-5481R**[Primary Antibody]****phospho-MEF2C (Ser387) Rabbit pAb****BioSS**
ANTIBODIES

www.bioss.com.cn

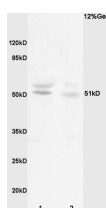
sales@bioss.com.cn

techsupport@bioss.com.cn

400-901-9800

— DATASHEET —

Host: Rabbit	Isotype: IgG	Applications: WB (1:500-2000)
Clonality: Polyclonal		Reactivity: Mouse, Rat (predicted: Human, Rabbit, Dog)
GeneID: 4208	SWISS: Q06413	Predicted MW.: 51 kDa
Target: MEF2C (Ser387)		Subcellular Location: Nucleus
Immunogen: KLH conjugated Synthesised phosphopeptide derived from human MEF2C around the phosphorylation site of Ser387: TQ(p-S)L.		
Purification: affinity purified by Protein A		
Concentration: 1mg/ml		
Storage: 0.01M TBS (pH7.4) with 1% BSA, 0.02% Proclin300 and 50% Glycerol. Shipped at 4°C. Store at -20°C for one year. Avoid repeated freeze/thaw cycles.		
Background: MEF2C is a transcription activator which binds specifically to the MEF2 element present in the regulatory regions of many muscle-specific genes. This protein controls cardiac morphogenesis and myogenesis, and is also involved in vascular development. It may also be involved in neurogenesis and in the development of cortical architecture.		

— VALIDATION IMAGES —

Sample: Muscle (Mouse) Lysate at 40 ug Brain
(Rat) Lysate at 40 ug Primary: Anti- phospho-
MEF2C(Ser387) (bs-5481R) at 1/300 dilution
Secondary: HRP conjugated Goat-Anti-rabbit IgG
(bs-0295G-HRP) at 1/5000 dilution Predicted
band size: 51 kD Observed band size: 51 kD