

bsm-60686R**[Primary Antibody]****EEF1A1 Recombinant Rabbit mAb****BioSS**
ANTIBODIES

www.bioss.com.cn

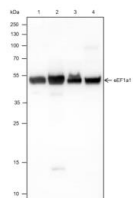
sales@bioss.com.cn

techsupport@bioss.com.cn

400-901-9800

— DATASHEET —

Host: Rabbit	Isotype: IgG	Applications: WB (1:500-2000) ICC/IF (1:50-100) Reactivity: Human, Rat (predicted: Mouse) Predicted MW.: 50 kDa Subcellular Location: Cytoplasm
Clonality: Recombinant	CloneNo.: R8F9	
GeneID: 1915	SWISS: P68104	
Target: EEF1A1		
Purification: affinity purified by Protein A		
Concentration: 1mg/ml		
Storage: 0.01M TBS (pH7.4) with 1% BSA, 0.02% Proclin300 and 50% Glycerol. Shipped at 4°C. Store at -20°C for one year. Avoid repeated freeze/thaw cycles.		
Background: This gene encodes an isoform of the alpha subunit of the elongation factor-1 complex, which is responsible for the enzymatic delivery of aminoacyl tRNAs to the ribosome. This isoform (alpha 1) is expressed in brain, placenta, lung, liver, kidney, and pancreas, and the other isoform (alpha 2) is expressed in brain, heart and skeletal muscle. This isoform is identified as an autoantigen in 66% of patients with Felty syndrome. This gene has been found to have multiple copies on many chromosomes, some of which, if not all, represent different pseudogenes. [provided by RefSeq, Jul 2008]		

— VALIDATION IMAGES —

Blocking buffer: 5% NFDM/TBST Primary Ab
dilution: 1:1000 Primary Ab incubation
condition: 2 hours at room temperature
Secondary Ab: Goat Anti-Rabbit IgG H&L (HRP)
Lysate: 1: MCF7, 2: PANC-1, 3: Neuro-2a, 4: Rat
kidney Protein loading quantity: 20 µg Exposure
time: 10 s Predicted MW: 50 kDa Observed MW:
55 kDa