

bsm-52841R**[Primary Antibody]****BioSS**
ANTIBODIES

www.bioss.com.cn

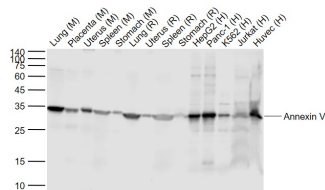
sales@bioss.com.cn

techsupport@bioss.com.cn

400-901-9800

Annexin V Recombinant Rabbit mAb**— DATASHEET —**

| | | |
|--|----------------------|--|
| Host: Rabbit | Isotype: IgG | Applications: WB (1:500-2000) Flow-Cyt (1:50-100) ICC/IF (1:100-500) Reactivity: Human, Mouse, Rat Predicted MW.: 36 kDa Subcellular Location: Cell membrane ,Cytoplasm |
| Clonality: Recombinant | CloneNo.: 6C7 | |
| GeneID: 308 | SWISS: P08758 | |
| Target: Annexin V | | |
| Immunogen: A synthesized peptide derived from human Annexin V: 301-320. | | |
| Purification: affinity purified by Protein A | | |
| Concentration: 1mg/ml | | |
| Storage: 0.01M TBS (pH7.4) with 1% BSA, 0.02% Proclin300 and 50% Glycerol. Shipped at 4°C. Store at -20°C for one year. Avoid repeated freeze/thaw cycles. | | |
| Background: The protein encoded by this gene belongs to the annexin family of calcium-dependent phospholipid binding proteins some of which have been implicated in membrane-related events along exocytotic and endocytotic pathways. Annexin 5 is a phospholipase A2 and protein kinase C inhibitory protein with calcium channel activity and a potential role in cellular signal transduction, inflammation, growth and differentiation. Annexin 5 has also been described as placental anticoagulant protein I, vascular anticoagulant-alpha, endonexin II, lipocortin V, placental protein 4 and anchorin CII. The gene spans 29 kb containing 13 exons, and encodes a single transcript of approximately 1.6 kb and a protein product with a molecular weight of about 35 kDa. [provided by RefSeq, Jul 2008]. | | |

— VALIDATION IMAGES —

Sample: Lane 1: Lung (Mouse) Lysate at 40 ug
 Lane 2: Placenta (Mouse) Lysate at 40 ug Lane 3:
 Uterus (Mouse) Lysate at 40 ug Lane 4: Spleen
 (Mouse) Lysate at 40 ug Lane 5: Stomach
 (Mouse) Lysate at 40 ug Lane 6: Lung (Rat) Lysate
 at 40 ug Lane 7: Uterus (Rat) Lysate at 40 ug Lane
 8: Spleen (Rat) Lysate at 40 ug Lane 9: Stomach
 (Rat) Lysate at 40 ug Lane 10: HepG2 (Human)
 Cell Lysate at 30 ug Lane 11: Panc-1 (Human)
 Cell Lysate at 30 ug Lane 12: K562 (Human) Cell
 Lysate at 30 ug Lane 13: Jurkat (Human) Cell
 Lysate at 30 ug Lane 14: Huvec(Human) Cell
 Lysate at 30 ug Primary: Anti-Annexin V
 (bsm-52841R) at 1/1000 dilution Secondary:
 IRDye800CW Goat Anti-Rabbit IgG at 1/20000
 dilution Predicted band size: 32 kD Observed
 band size: 34 kD

— SELECTED CITATIONS —

- **[IF=4.8]** Shu-Yu Wu. et al. Monomethyl fumarate attenuates lung Ischemia/Reperfusion injury by disrupting the

Important Note: This product as supplied is intended for research use only, not for use in human, therapeutic or diagnostic applications.

GAPDH/Siah1 signaling cascade. INT IMMUNOPHARMACOL. 2024 Aug;137:112488 IF ;Human. 38889510