

**bs-2783R****[ Primary Antibody ]****CD44v4 Rabbit pAb****Bioss**  
**ANTIBODIES**

www.bioss.com.cn

sales@bioss.com.cn

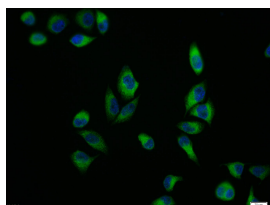
techsupport@bioss.com.cn

400-901-9800

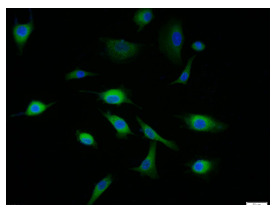
**— DATASHEET —****Host:** Rabbit**Isotype:** IgG**Clonality:** Polyclonal**GeneID:** 960**SWISS:** P16070**Target:** CD44v4**Immunogen:** KLH conjugated synthetic peptide derived from human CD44v4: 141-240/361.**Purification:** affinity purified by Protein A**Concentration:** 1mg/ml**Storage:** 0.01M TBS (pH7.4) with 1% BSA, 0.02% Proclin300 and 50% Glycerol.

Shipped at 4°C. Store at -20°C for one year. Avoid repeated freeze/thaw cycles.

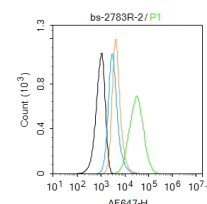
**Background:** The protein encoded by this gene is a cell-surface glycoprotein involved in cell-cell interactions, cell adhesion and migration. It is a receptor for hyaluronic acid (HA) and can also interact with other ligands, such as osteopontin, collagens, and matrix metalloproteinases (MMPs). This protein participates in a wide variety of cellular functions including lymphocyte activation, recirculation and homing, hematopoiesis, and tumor metastasis. Transcripts for this gene undergo complex alternative splicing that results in many functionally distinct isoforms, however, the full length nature of some of these variants has not been determined. Alternative splicing is the basis for the structural and functional diversity of this protein, and may be related to tumor metastasis. [provided by RefSeq, Jul 2008].

**Applications:** **Flow-Cyt** (1µg /Test)  
**ICC/IF** (1:100)**Reactivity:** Human, Mouse  
(predicted: Rabbit, Dog, Horse)**Predicted MW.:** 37 kDa**Subcellular Location:** Cell membrane**— VALIDATION IMAGES —**

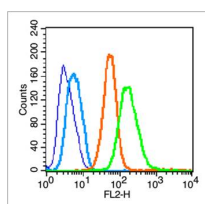
HeLa cell; 4% Paraformaldehyde-fixed; Triton X-100 at room temperature for 20 min; Blocking buffer (normal goat serum, C-0005) at 37°C for 20 min; Antibody incubation with (CD44v4) polyclonal Antibody, Unconjugated (bs-2783R) 1:100, 90 minutes at 37°C; followed by a conjugated Goat Anti-Rabbit IgG antibody at 37°C for 90 minutes, DAPI (blue, C02-04002) was used to stain the cell nuclei.



Tissue/cell: A549 cell; 4% Paraformaldehyde-fixed; Triton X-100 at room temperature for 20 min; Blocking buffer (normal goat serum, C-0005) at 37°C for 20 min; Antibody incubation with (CD44v4) polyclonal Antibody, Unconjugated (bs-2783R) 1:100, 90 minutes at 37°C; followed by a FITC conjugated Goat Anti-Rabbit IgG antibody at 37°C for 90 minutes, DAPI (blue, C02-04002) was used to stain the cell nuclei.



Blank control: HELA. Primary Antibody (green line): Rabbit Anti-CD44v4 antibody (bs-2783R) Dilution: 2µg /10<sup>6</sup> cells; Isotype Control Antibody (orange line): Rabbit IgG. Secondary Antibody : Goat anti-rabbit IgG-AF647 Dilution: 1µg /test. Protocol The cells were incubated in 5%BSA to block non-specific protein-protein interactions for 30 min at room temperature .Cells stained with Primary Antibody for 30 min at room temperature. The secondary antibody used for 40 min at room temperature. Acquisition of 20,000 events was performed.



Important Note: This product as supplied is intended for research use only, not for use in human, therapeutic or diagnostic applications.

Blank control(blue): U251 (fixed with Ice-cold 70% ethanol overnight at 4 °C). Primary Antibody:Rabbit Anti-CD44v4 antibody (bs-2783R,Green); Dilution: 0.2µg in 100 µL 1X PBS containing 0.5% BSA; Isotype Control Antibody: Rabbit IgG(orange) ,used under the same conditions; Secondary Antibody: Goat anti-rabbit IgG-FITC(white blue), Dilution: 1:200 in 1 X PBS containing 0.5% BSA.

---

## — SELECTED CITATIONS —

- **[IF=6.1]** Xue Lulu. et al. Transplantation of human placental chorionic plate-derived mesenchymal stem cells for repair of neurological damage in neonatal hypoxic-ischemic encephalopathy. NEURAL REGEN RES. 2023 Dec;;10.4103/1673 IF ;Human. 10.4103/1673-5374.390952
- **[IF=3.2]** Hao Chen. et al.CD44v6-mediated regulation of gastric cancer stem cells: a potential therapeutic target.clinical and experimental medicine.2025 Mar 12;25(1):80. IHC ;Human. 40069421