
CD44v10 Rabbit pAb

Catalog Number: bs-2780R

Target Protein: CD44v10

Concentration: 1mg/ml

Form: Liquid

Host: Rabbit

Clonality: Polyclonal

Isotype: IgG

Applications: WB (1:500-2000), Flow-Cyt (1µg /Test)

Reactivity: Human, Mouse (predicted:Rat, Rabbit, Pig, Dog)

Predicted MW: 82 kDa

Entrez Gene: 960

Swiss Prot: P16070

Source: KLH conjugated synthetic peptide derived from human CD44v10: 218-227/742.

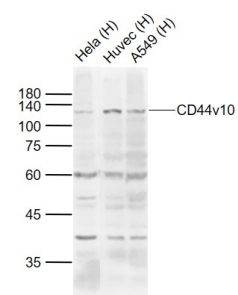
Purification: affinity purified by Protein A

Storage: 0.01M TBS (pH7.4) with 1% BSA, 0.02% Proclin300 and 50% Glycerol.

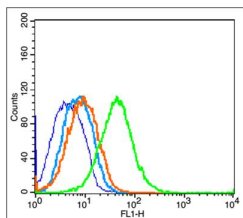
Shipped at 4°C. Store at -20°C for one year. Avoid repeated freeze/thaw cycles.

Background: The protein encoded by this gene is a cell-surface glycoprotein involved in cell-cell interactions, cell adhesion and migration. It is a receptor for hyaluronic acid (HA) and can also interact with other ligands, such as osteopontin, collagens, and matrix metalloproteinases (MMPs). This protein participates in a wide variety of cellular functions including lymphocyte activation, recirculation and homing, hematopoiesis, and tumor metastasis. Transcripts for this gene undergo complex alternative splicing that results in many functionally distinct isoforms, however, the full length nature of some of these variants has not been determined. Alternative splicing is the basis for the structural and functional diversity of this protein, and may be related to tumor metastasis. [provided by RefSeq, Jul 2008].

VALIDATION IMAGES



Sample: Lane 1: HeLa (Human) Cell Lysate at 30 ug Lane 2: Huvec (Human) Cell Lysate at 30 ug Lane 3: A549 (Human) Cell Lysate at 30 ug Primary: Anti-CD44v10 (bs-2780R) at 1/1000 dilution Secondary: IRDye800CW Goat Anti-Rabbit IgG at 1/20000 dilution Predicted band size: 110-180 kD Observed band size: 110-180 kD



Blank control(blue): Mouse spleen (fixed with 2% paraformaldehyde for 10 min at 37°C). Primary Antibody:Rabbit Anti-CD44v10 antibody (bs-2780R,Green); Dilution: 1µg in 100 µL 1X PBS containing 0.5% BSA; Isotype Control Antibody: Rabbit IgG(orange) ,used under the same conditions; Secondary Antibody: Goat anti-rabbit IgG-FITC(white blue), Dilution: 1:200 in 1 X PBS containing 0.5% BSA.