

bsm-60682R**[Primary Antibody]****ORAI3 Recombinant Rabbit mAb****BioSS**
ANTIBODIES

www.bioss.com.cn

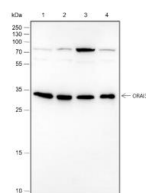
sales@bioss.com.cn

techsupport@bioss.com.cn

400-901-9800

— DATASHEET —

Host: Rabbit	Isotype: IgG	Applications: WB (1:500-2000)
Clonality: Recombinant	CloneNo.: R5C12	Reactivity: Human
GeneID: 93129	SWISS: Q9BRQ5	
Target: ORAI3		
Purification: affinity purified by Protein A		
Concentration: 1mg/ml		Predicted MW.: 31 kDa
Storage: 0.01M TBS (pH7.4) with 1% BSA, 0.02% Proclin300 and 50% Glycerol. Shipped at 4°C. Store at -20°C for one year. Avoid repeated freeze/thaw cycles.		Subcellular Location: Cell membrane
Background: Predicted to enable store-operated calcium channel activity. Predicted to be involved in store-operated calcium entry. Predicted to be located in plasma membrane. Predicted to be integral component of membrane. Predicted to be active in membrane. [provided by Alliance of Genome Resources, Apr 2022]		

— VALIDATION IMAGES —

Blocking buffer: 5% NFDm/TBST Primary Ab
dilution: 1:1000 Primary Ab incubation
condition: 2 hours at room temperature
Secondary Ab: Goat Anti-Rabbit IgG H&L (HRP)
Lysate: 1: A431, 2: A549, 3: Raji, 4: NIH/3T3
Protein loading quantity: 20 µg Exposure time:
60 s Predicted MW: 32 kDa Observed MW: 32 kDa