

**bs-11325R****[ Primary Antibody ]****Nova2 Rabbit pAb****BioSS**  
**ANTIBODIES**

www.bioss.com.cn

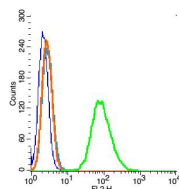
sales@bioss.com.cn

techsupport@bioss.com.cn

400-901-9800

**— DATASHEET —**

<b>Host:</b> Rabbit	<b>Isotype:</b> IgG	<b>Applications:</b> Flow-Cyt (1µg/Test)
<b>Clonality:</b> Polyclonal		<b>Reactivity:</b> Rat (predicted: Human, Mouse, Rabbit, Chicken, Dog)
<b>GeneID:</b> 4858	<b>SWISS:</b> Q9UNW9	<b>Predicted MW.:</b> 49 kDa
<b>Target:</b> Nova2		<b>Subcellular Location:</b> Nucleus
<b>Immunogen:</b> KLH conjugated synthetic peptide derived from human Nova2: 401-492/492.		
<b>Purification:</b> affinity purified by Protein A		
<b>Concentration:</b> 1mg/ml		
<b>Storage:</b> 0.01M TBS (pH7.4) with 1% BSA, 0.02% Proclin300 and 50% Glycerol. Shipped at 4°C. Store at -20°C for one year. Avoid repeated freeze/thaw cycles.		
<b>Background:</b> Nova-1 and Nova-2 are members of a superfamily of protein regulators of RNA metabolism in neurons. Both are nuclear RNA binding proteins with K homology motifs, conserved protein sequences which bind to RNA (1,2). Nova proteins, normally sequestered in the central nervous system, are expressed by systemic tumors in patients with the autoimmune disorder paraneoplastic opsoclonus-myoclonus ataxia (POMA) (3,4). Nova-1 is expressed in the hindbrain and ventral spinal cord and Nova-2 is expressed in the neocortex and hippocampus (4). Nova-1 is necessary for regulating neuron-specific alternative splicing of the glycine receptor Alpha2 pre-mRNA (5).		

**— VALIDATION IMAGES —**

Blank control(blue): RSC96(fixed with 2% paraformaldehyde (10 min) , then permeabilized with 90% ice-cold methanol for 30 min on ice).  
Primary Antibody:Rabbit Anti- Nova2 antibody(bs-11325R), Dilution: 1µg in 100 µL 1X PBS containing 0.5% BSA; Isotype Control Antibody: Rabbit IgG(orange) ,used under the same conditions ); Secondary Antibody: Goat anti-rabbit IgG-PE(white blue), Dilution: 1:200 in 1 X PBS containing 0.5% BSA.