

C5b-9 Rabbit pAb

Catalog Number: bs-2673R

Target Protein: C5b-9

Concentration: 1mg/ml

Form: Liquid

Host: Rabbit

Clonality: Polyclonal

Isotype: IgG

Applications: WB (1:500-2000), IHC-P (1:100-500), IHC-F (1:100-500), IF (1:100-500)

Reactivity: Human, Rat (predicted:Mouse)

Entrez Gene: 727

Swiss Prot: P01031

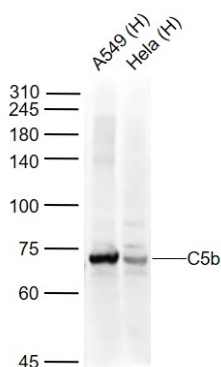
Purification: affinity purified by Protein A

Storage: 0.01M TBS (pH7.4) with 1% BSA, 0.02% Proclin300 and 50% Glycerol.

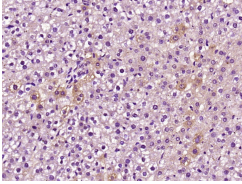
Shipped at 4°C. Store at -20°C for one year. Avoid repeated freeze/thaw cycles.

Background: Activation of the complement system plays a key role in normal inflammatory response to injury but may cause substantial injury when activated inappropriately. The complement system is activated either through the classical (antibody induced) or the alternative (microbial surface, polysaccharide induced) pathway, both leading to the formation of the C5b9 complex. Fluid phase binding of the multifunctional glycoprotein S protein (vitronectin) to C5b9 leads to the formation of a cytolytically inactive complex, SC5b9, which is unable to attach to cells.

VALIDATION IMAGES



Sample: Lane 1: A549 (Human) Cell Lysate at 30 ug Lane 2: HeLa (Human) Cell Lysate at 30 ug Primary: Anti-C5b (bs-2673R) at 1/1000 dilution Secondary: IRDye800CW Goat Anti-Rabbit IgG at 1/20000 dilution Predicted band size: 72 kD Observed band size: 72 kD



Paraformaldehyde-fixed, paraffin embedded (Rat liver); Antigen retrieval by boiling in sodium citrate buffer (pH6.0) for 15min; Block endogenous peroxidase by 3% hydrogen peroxide for 20 minutes; Blocking buffer (normal goat serum) at 37°C for 30min; Antibody incubation with (C5b-9) Polyclonal Antibody, Unconjugated (bs-2673R) at 1:500 overnight at 4°C, followed by a conjugated secondary (sp-0023) for 20 minutes and DAB staining.

PRODUCT SPECIFIC PUBLICATIONS

[IF=64.5] Dongqing Xu. et al. Complement in breast milk modifies offspring gut microbiota to promote infant health. CELL. 2024 Jan 18 FCM ; Staphylococcus lentus (B3 strain) . 38242132

[IF=19.456] Wenbin Yang. et al. IL-1 β -dependent extravasation of preexisting lung-restricted autoantibodies during lung transplantation activates complement and mediates primary graft dysfunction. J CLIN INVEST. 2022 Oct 17;132(20):e157975 IHC ; Mouse . 36250462

[IF=16.6] Hu Mengyan. et al. Macrophage lineage cells-derived migrasomes activate complement-dependent blood-brain barrier damage in cerebral amyloid angiopathy mouse model. NAT COMMUN. 2023 Jul;14(1):1-19 IF ; Mouse . 37402721

[IF=15.1] Suzanne M. Green-Fulham. et al. Voluntary wheel running prevents formation of membrane attack complexes and myelin degradation after peripheral nerve injury. BRAIN BEHAV IMMUN. 2023 Nov;; IHC,IF ; Rat . 37924957

[IF=9.685] Chen, Yujie. et al. GSDME deficiency leads to the aggravation of UVB-induced skin inflammation through enhancing recruitment and activation of neutrophils. CELL DEATH DIS. 2022 Oct;13(10):1-14 IF ; Mouse . 36182937