

---

## CASP4 Rabbit pAb

Catalog Number: bs-0082R

Target Protein: CASP4

Concentration: 1mg/ml

Form: Liquid

Host: Rabbit

Clonality: Polyclonal

Isotype: IgG

Applications: Flow-Cyt (2ug/Test)

Reactivity: Human, Zebrafish (predicted:Mouse, Rat, Rabbit, Chicken)

Predicted MW: 20/43 kDa

Entrez Gene: 12363

Swiss Prot: P70343

Source: KLH conjugated synthetic peptide derived from mouse Caspase-4 subunit p20: 201-300/373.

Purification: affinity purified by Protein A

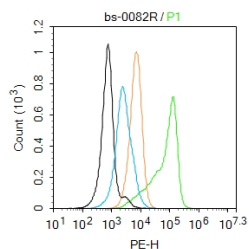
Storage: 0.01M TBS (pH7.4) with 1% BSA, 0.02% Proclin300 and 50% Glycerol.

Shipped at 4°C. Store at -20°C for one year. Avoid repeated freeze/thaw cycles.

**Background:** Caspase 4 is a 377 amino acid protein (43 kDa) that belongs to the Ced3/ICE family of cysteine proteases. Caspase 4 is an "upstream" caspase with a long prodomain. It undergoes a cleavage upon activation, leading to p20 and p10 subunits which have 67% homology to mature Caspase 1 over the equivalent coding sequences. Caspase 4 is capable of cleaving itself and the p30 Caspase 1 precursor, and of inducing apoptosis in transfected insect or COS cells. In high concentrations, it can also cleave the nuclear DNA enzyme PARP but the biological relevance of this cleavage is unclear. Caspase 4 mRNA is found in most tissues examined with the exception of the brain. Highest expression is found in spleen and lung, with moderate expression in heart and liver. Low expression is observed with skeletal muscle, kidney, and testis.

### VALIDATION IMAGES

---



Blank control:U937. Primary Antibody (green line): Rabbit Anti-Caspase 4 p20 antibody (bs-0082R) Dilution: 2µg /10<sup>6</sup> cells; Isotype Control Antibody (orange line): Rabbit IgG . Secondary Antibody : Goat anti-rabbit IgG-PE Dilution: 1µg /test. Protocol The cells were fixed with 4% PFA (10min at room temperature)and then permeabilized with 90% ice-cold methanol for 20 min at room temperature. The cells were then incubated in 5%BSA to block non-specific protein-protein interactions for 30 min at room temperature .Cells stained with Primary Antibody for 30 min at room temperature. The secondary antibody used for 40 min at room temperature. Acquisition of 20,000 events was performed.