

bs-19776R**[Primary Antibody]****RBMS1/Cervical cancer oncogene 4 Rabbit pAb****Bioss**
ANTIBODIES

www.bioss.com.cn

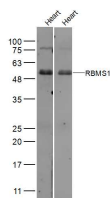
sales@bioss.com.cn

techsupport@bioss.com.cn

400-901-9800

— DATASHEET —

Host: Rabbit	Isotype: IgG	Applications: WB (1:500-2000)
Clonality: Polyclonal		Reactivity: Mouse (predicted: Human, Rat, Rabbit, Pig, Sheep, Cow, Dog, Horse)
GeneID: 5937	SWISS: P29558	Predicted MW.: 45 kDa
Target: RBMS1/Cervical cancer oncogene 4		Subcellular Location: Nucleus
Immunogen: KLH conjugated synthetic peptide derived from human RBMS1/Cervical cancer oncogene 4: 181-280/406.		
Purification: affinity purified by Protein A		
Concentration: 1mg/ml		
Storage: 0.01M TBS (pH7.4) with 1% BSA, 0.02% Proclin300 and 50% Glycerol. Shipped at 4°C. Store at -20°C for one year. Avoid repeated freeze/thaw cycles.		
Background: This gene encodes a member of a small family of proteins which bind single stranded DNA/RNA. These proteins are characterized by the presence of two sets of ribonucleoprotein consensus sequence (RNP-CS) that contain conserved motifs, RNP1 and RNP2, originally described in RNA binding proteins, and required for DNA binding. These proteins have been implicated in such diverse functions as DNA replication, gene transcription, cell cycle progression and apoptosis. Several transcript variants, resulting from alternative splicing and encoding different isoforms, have been described. A pseudogene for this locus is found on chromosome 12. [provided by RefSeq, Feb 2009]		

— VALIDATION IMAGES —

Sample: Heart (Mouse) Lysate at 40 ug
(Mouse) Lysate at 40 ug Primary: Anti-RBMS1 (bs-19776R) at 1/500 dilution
Anti-RBMS1 (bs-19776R) at 1/20000 dilution
Secondary: IRDye800CW Goat Anti-Rabbit IgG at 1/20000 dilution
Predicted band size: 45 kD
Observed band size: 50 kD