

bs-19775R

[Primary Antibody]

RBM6 Rabbit pAb

BioSS
ANTIBODIES

www.bioss.com.cn

sales@bioss.com.cn

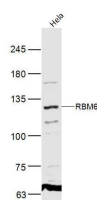
techsupport@bioss.com.cn

400-901-9800

— DATASHEET —

Host: Rabbit	Isotype: IgG	Applications: WB (1:500-2000)
Clonality: Polyclonal		
GeneID: 10180	SWISS: P78332	
Target: RBM6		
Immunogen: KLH conjugated synthetic peptide derived from human RBM6: 1031-1123/1123.		
Purification: affinity purified by Protein A		Reactivity: Human (predicted: Mouse, Rat, Rabbit, Pig, Sheep, Cow, Chicken, Dog, Horse)
Concentration: 1mg/ml		Predicted MW.: 129 kDa
Storage: 0.01M TBS (pH7.4) with 1% BSA, 0.02% Proclin300 and 50% Glycerol. Shipped at 4°C. Store at -20°C for one year. Avoid repeated freeze/thaw cycles.		Subcellular Location: Nucleus
Background: Enables RNA binding activity. Predicted to be involved in mRNA splicing, via spliceosome. Predicted to be active in nucleus. [provided by Alliance of Genome Resources, Apr 2022]		

— VALIDATION IMAGES —



Sample: HeLa(Human) Cell Lysate at 40 ug
Primary: Anti-RBM6 (bs-19775R) at 1/300 dilution
Secondary: IRDye800CW Goat Anti-Rabbit IgG at 1/20000 dilution Predicted band size: 129 kD
Observed band size: 129 kD