

bs-2669R**[Primary Antibody]****phospho-NFATc2 (Ser326) Rabbit pAb****BioSS**
ANTIBODIES

www.bioss.com.cn

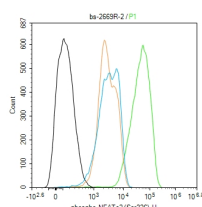
sales@bioss.com.cn

techsupport@bioss.com.cn

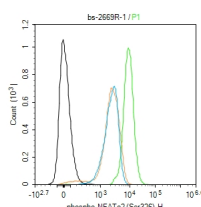
400-901-9800

DATASHEET

Host: Rabbit Clonality: Polyclonal GeneID: 4773 Target: NFATc2 (Ser326) Immunogen: KLH conjugated Synthesised phosphopeptide derived from human NFATc2 around the phosphorylation site of Ser326: KT(p-S)PD. Purification: affinity purified by Protein A Concentration: 1mg/ml Storage: 0.01M TBS (pH7.4) with 1% BSA, 0.02% Proclin300 and 50% Glycerol. Shipped at 4°C. Store at -20°C for one year. Avoid repeated freeze/thaw cycles. Background: This gene is a member of the nuclear factor of activated T cells (NFAT) family. The product of this gene is a DNA-binding protein with a REL-homology region (RHR) and an NFAT-homology region (NHR). This protein is present in the cytosol and only translocates to the nucleus upon T cell receptor (TCR) stimulation, where it becomes a member of the nuclear factors of activated T cells transcription complex. This complex plays a central role in inducing gene transcription during the immune response. Alternate transcriptional splice variants encoding different isoforms have been characterized. [provided by RefSeq, Apr 2012]	Isotype: IgG SWISS: Q13469	Applications: Flow-Cyt (1-2ug/Test) Reactivity: Human (predicted: Mouse, Rat, Pig, Cow, Chicken, Dog, Horse) Predicted MW.: 102 kDa Subcellular Location: Cytoplasm ,Nucleus
--	---	---

VALIDATION IMAGES

Blank control (black line) :U251. Primary Antibody (green line): Rabbit Anti-phospho-NFATc2 (Ser326) antibody (bs-2669R)
Dilution:2ug/Test; Secondary Antibody (white blue line) : Goat anti-rabbit IgG-AF488 Dilution: 0.5ug/Test. Isotype control (orange line) : Normal Rabbit IgG Protocol The cells were fixed with 4% PFA (10min at room temperature)and then permeabilized with 90% ice-cold methanol for 20 min at -20°C, The cells were then incubated in 5%BSA to block non-specific protein-protein interactions for 30 min at room temperature .Cells stained with Primary Antibody for 30 min at room temperature. The secondary antibody used for 40 min at room temperature. Acquisition of 20,000 events was performed.



Blank control (black line) :Molt4. Primary Antibody (green line): Rabbit Anti-phospho-NFATc2 (Ser326) antibody (bs-2669R)
Dilution:1ug/Test; Secondary Antibody (white blue line) : Goat anti-rabbit IgG-AF488 Dilution: 0.5ug/Test. Isotype control (orange line) : Normal Rabbit IgG Protocol The cells were fixed with 4% PFA (10min at room temperature)and then permeabilized with 90% ice-cold methanol for 20 min at -20°C, The cells were then incubated in 5%BSA to block non-specific protein-protein interactions for 30 min at room temperature .Cells stained with Primary Antibody for 30 min at room temperature. The secondary antibody used for 40 min at room temperature. Acquisition of 20,000 events was performed.

SELECTED CITATIONS

- **[IF=3.578]** Tetsuro Marunouchi. et al. Simvastatin attenuates the c-Raf/Erk and calcineurin-NFATc2 pathways via inhibition of Hsp90 activity during the development of heart failure.. J PHARMACOL SCI. 2022 Nov;; WB ;Rat. 36522119

Important Note: This product as supplied is intended for research use only, not for use in human, therapeutic or diagnostic applications.

- **[IF=2.598]** Marunouchi Tetsuro. et al. Hsp90 Inhibitor Attenuates the Development of Pathophysiological Cardiac Fibrosis in Mouse Hypertrophy via Suppression of the Calcineurin-NFAT and c-Raf-Erk Pathways. J Cardiovasc Pharm. 2021 Jun;77(6):822-829 WB ;Mouse. 34016843