

bs-2666R**[Primary Antibody]****C-REL Rabbit pAb****Bioss**
ANTIBODIES

www.bioss.com.cn

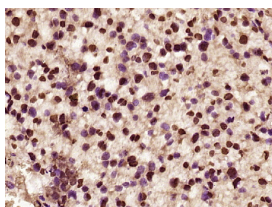
sales@bioss.com.cn

techsupport@bioss.com.cn

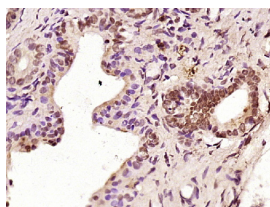
400-901-9800

DATASHEET

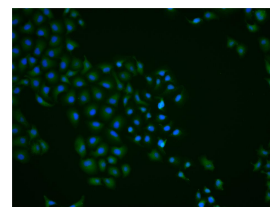
Host: Rabbit	Isotype: IgG	Applications: IHC-P (1:100-500) IHC-F (1:100-500) IF (1:100-500) Flow-Cyt (2ug/Test) ICC/IF (1:25) Reactivity: Human, Mouse, Rat (predicted: Pig, Chicken, Horse) Predicted MW.: 68 kDa Subcellular Location: Nucleus
Clonality: Polyclonal		
GeneID: 5966	SWISS: Q04864	
Target: C-REL		
Immunogen: KLH conjugated synthetic peptide derived from human C-REL: 51-150/619.		
Purification: affinity purified by Protein A		
Concentration: 1mg/ml		
Storage: 0.01M TBS (pH7.4) with 1% BSA, 0.02% Proclin300 and 50% Glycerol. Shipped at 4°C. Store at -20°C for one year. Avoid repeated freeze/thaw cycles.		
Background: The REL gene encodes c-Rel, a transcription factor that is a member of the Rel/NFkB family, which also includes RELA (MIM 164014), RELB (604758), NFkB1 (MIM 164011), and NFkB2 (MIM 164012). These proteins are related through a highly conserved N-terminal region termed the 'Rel domain,' which is responsible for DNA binding, dimerization, nuclear localization, and binding to the NFkB inhibitor (MIM 164008) (Belguise and Sonenshein, 2007 [PubMed 18037997]).[supplied by OMIM, May 2008].		

VALIDATION IMAGES

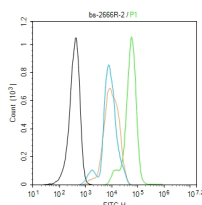
Paraformaldehyde-fixed, paraffin embedded (Mouse placenta); Antigen retrieval by boiling in sodium citrate buffer (pH6.0) for 15min; Block endogenous peroxidase by 3% hydrogen peroxide for 20 minutes; Blocking buffer (normal goat serum) at 37°C for 30min; Antibody incubation with (C-REL) Polyclonal Antibody, Unconjugated (bs-2666R) at 1:400 overnight at 4°C, followed by operating according to SP Kit(Rabbit) (sp-0023) instructions and DAB staining.



Paraformaldehyde-fixed, paraffin embedded (Rat pancreas); Antigen retrieval by boiling in sodium citrate buffer (pH6.0) for 15min; Block endogenous peroxidase by 3% hydrogen peroxide for 20 minutes; Blocking buffer (normal goat serum) at 37°C for 30min; Antibody incubation with (C-REL) Polyclonal Antibody, Unconjugated (bs-2666R) at 1:400 overnight at 4°C, followed by operating according to SP Kit(Rabbit) (sp-0023) instructions and DAB staining.



Hela cell; 4% Paraformaldehyde-fixed; Triton X-100 at room temperature for 20 min; Blocking buffer (normal goat serum, C-0005) at 37°C for 20 min; Antibody incubation with (C-REL) polyclonal Antibody, Unconjugated (bs-2666R) 1:25, 90 minutes at 37°C; followed by a conjugated Goat Anti-Rabbit IgG antibody at 37°C for 90 minutes, DAPI (blue, C02-04002) was used to stain the cell nuclei.



Blank control (black line) :Hela. Primary Antibody (green line): Rabbit Anti-C-REL antibody (bs-2666R) Dilution:2ug/Test; Secondary Antibody (white blue line) : Goat anti-rabbit IgG-FITC Dilution: 0.5ug/Test. Isotype control (orange line) : Normal Rabbit IgG

Important Note: This product as supplied is intended for research use only, not for use in human, therapeutic or diagnostic applications.

Protocol The cells were fixed with 4% PFA (10min at room temperature) and then permeabilized with 90% ice-cold methanol for 20 min at -20°C. The cells were then incubated in 5% BSA to block non-specific protein-protein interactions for 30 min at room temperature. Cells stained with Primary Antibody for 30 min at room temperature. The secondary antibody used for 40 min at room temperature. Acquisition of 20,000 events was performed.