

bs-2665R**[Primary Antibody]****Regucalcin Rabbit pAb****Bioss**
ANTIBODIES

www.bioss.com.cn

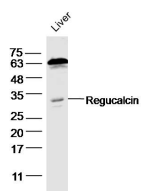
sales@bioss.com.cn

techsupport@bioss.com.cn

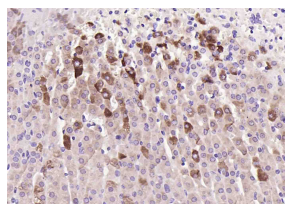
400-901-9800

— DATASHEET —**Host:** Rabbit**Isotype:** IgG**Clonality:** Polyclonal**GeneID:** 9104**SWISS:** Q15493**Target:** Regucalcin**Immunogen:** KLH conjugated synthetic peptide derived from human Regucalcin: 65-160/299.**Purification:** affinity purified by Protein A**Concentration:** 1mg/ml**Storage:** 0.01M TBS (pH7.4) with 1% BSA, 0.02% Proclin300 and 50% Glycerol.

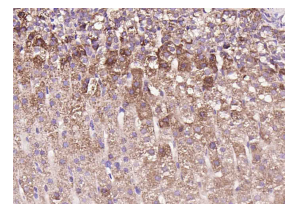
Shipped at 4°C. Store at -20°C for one year. Avoid repeated freeze/thaw cycles.

Background: Regucalcin is a Ca²⁺ binding protein that is encoded by a highly conserved gene in vertebrate species. Regucalcin is greatly expressed in liver and kidney cortex, and the expression is mediated through a Ca²⁺ signaling mechanism with AP1 and NF1-A1 as transcriptional factors. It plays a multifunctional role as a regulatory protein in intracellular signaling processes in the cytoplasm and nucleus of cells including the maintenance of intracellular Ca²⁺ homeostasis, the regulation of various Ca²⁺ dependent protein kinases and tyrosine kinases, protein phosphatases, nitric oxide (NO) synthase, and the suppression of nuclear DNA and RNA syntheses. Regucalcin has suppressive effects on cell proliferation, cell death and apoptosis, and is suggested to play a physiologic role in the maintenance of cellular homeostasis.**Applications:** WB (1:500-2000)**IHC-P** (1:100-500)**IHC-F** (1:100-500)**IF** (1:100-500)**Flow-Cyt** (2ug/Test)**Reactivity:** Human, Mouse, Rat
(predicted: Rabbit, Pig, Cow, Chicken, Dog, Horse)**Predicted MW.:** 33 kDa**Subcellular Location:** Cytoplasm**— VALIDATION IMAGES —**

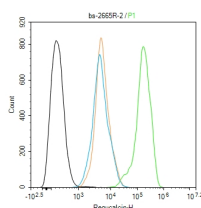
Sample: Liver (Mouse) Lysate at 40 ug Primary: Anti-Regucalcin (bs-2665R) at 1/300 dilution
Secondary: IRDye800CW Goat Anti-Rabbit IgG at 1/20000 dilution Predicted band size: 33 kD
Observed band size: 33 kD



Paraformaldehyde-fixed, paraffin embedded (mouse adrenal gland); Antigen retrieval by boiling in sodium citrate buffer (pH6.0) for 15min; Block endogenous peroxidase by 3% hydrogen peroxide for 20 minutes; Blocking buffer (normal goat serum) at 37°C for 30min; Incubation with (Regucalcin) Polyclonal Antibody, Unconjugated (bs-2665R) at 1:200 overnight at 4°C, followed by operating according to SP Kit(Rabbit) (sp-0023) instructions and DAB staining.



Paraformaldehyde-fixed, paraffin embedded (rat adrenal gland); Antigen retrieval by boiling in sodium citrate buffer (pH6.0) for 15min; Block endogenous peroxidase by 3% hydrogen peroxide for 20 minutes; Blocking buffer (normal goat serum) at 37°C for 30min; Incubation with (Regucalcin) Polyclonal Antibody, Unconjugated (bs-2665R) at 1:200 overnight at 4°C, followed by operating according to SP Kit(Rabbit) (sp-0023) instructions and DAB staining.



Blank control (black line) :HepG2. Primary

Important Note: This product as supplied is intended for research use only, not for use in human, therapeutic or diagnostic applications.

Antibody (green line): Rabbit Anti-Regucalcin antibody (bs-2665R) Dilution: 2ug/Test;
Secondary Antibody (white blue line) : Goat anti-rabbit IgG-AF488 Dilution: 0.5ug/Test.
Isotype control (orange line) : Normal Rabbit IgG Protocol The cells were fixed with 4% PFA (10min at room temperature) and then permeabilized with 90% ice-cold methanol for 20 min at -20°C. The cells were then incubated in 5% BSA to block non-specific protein-protein interactions for 30 min at room temperature. Cells stained with Primary Antibody for 30 min at room temperature. The secondary antibody used for 40 min at room temperature. Acquisition of 20,000 events was performed.