

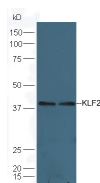
**bs-2772R****[ Primary Antibody ]****KLF2 Rabbit pAb****Bioss**  
**ANTIBODIES**

www.bioss.com.cn

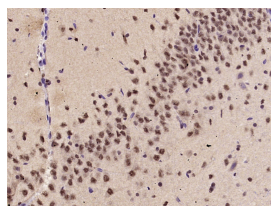
sales@bioss.com.cn

techsupport@bioss.com.cn

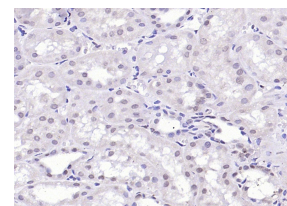
400-901-9800

**DATASHEET****Host:** Rabbit**Isotype:** IgG**Clonality:** Polyclonal**GeneID:** 10365**SWISS:** Q9Y5W3**Target:** KLF2**Immunogen:** KLH conjugated synthetic peptide derived from human KLF2: 251-355/355.**Purification:** affinity purified by Protein A**Concentration:** 1mg/ml**Storage:** 0.01M TBS (pH7.4) with 1% BSA, 0.02% Proclin300 and 50% Glycerol.  
Shipped at 4°C. Store at -20°C for one year. Avoid repeated freeze/thaw cycles.**Background:** Kruppel-like factors (KLFs) are a family of broadly expressed zinc finger transcription factors. KLF2 regulates T-cell trafficking by promoting expression of the lipid-binding receptor S1P1 (S1PR1; MIM 601974) and the selectin CD62L (SELL; MIM 153240) (summary by Weinreich et al., 2009 [PubMed 19592277]).[supplied by OMIM, Feb 2011]**Applications:** **WB** (1:100-500)**IHC-P** (1:100-500)**IHC-F** (1:100-500)**IF** (1:100-500)**Flow-Cyt** (1ug/Test)**Reactivity:** Human, Mouse, Rat  
(predicted: Rabbit, Pig, Sheep, Cow, Horse)**Predicted MW.:** 37 kDa**Subcellular Location:** Nucleus**VALIDATION IMAGES**

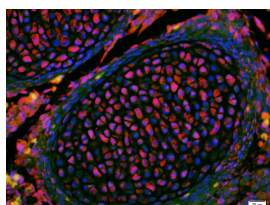
Sample: Lane1:Brain (Mouse) Lysate at 30 ug  
Lane2:HepG2 Cell Lysate at 30 ug Primary: Anti-KLF2 (bs-2772R) at 1:300 dilution; Secondary: HRP conjugated Goat-Anti-Rabbit IgG(bse-0295G-HRP) at 1: 5000 dilution;  
Predicted band size :39 kD Observed band size :39 kD



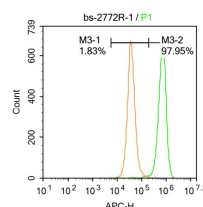
Paraformaldehyde-fixed, paraffin embedded (Rat brain); Antigen retrieval by microwave in sodium citrate buffer (pH6.0); Block endogenous peroxidase by 3% hydrogen peroxide for 30 minutes; Blocking buffer (3% BSA) at RT for 30min; Antibody incubation with (KLF2) Polyclonal Antibody, Unconjugated (bs-2772R) at 1:400 overnight at 4°C, followed by conjugation to the secondary antibody (labeled with HRP) and DAB staining.



Paraformaldehyde-fixed, paraffin embedded (Human kidney); Antigen retrieval by boiling in sodium citrate buffer (pH6.0) for 15min; Block endogenous peroxidase by 3% hydrogen peroxide for 20 minutes; Blocking buffer (normal goat serum) at 37°C for 30min; Antibody incubation with (KLF2) Polyclonal Antibody, Unconjugated (bs-2772R) at 1:200 overnight at 4°C, followed by operating according to SP Kit(Rabbit) (sp-0023) instructions and DAB staining.



Tissue/cell: Mouse embryos;4%  
Paraformaldehyde-fixed and paraffin-embedded; Antigen retrieval: citrate buffer (0.01M, pH 6.0), Boiling bathing for 15min; Blocking buffer (normal goat serum, C-0005) at 37°C for 20 min; Incubation: Anti-KLF2 Polyclonal Antibody, Unconjugated (bs-2772R) 1:200, overnight at 4°C; The secondary antibody was



Blank control: A431. Primary Antibody (green line): Rabbit Anti-KLF2 antibody (bs-2772R) Dilution: 1μg /10<sup>6</sup> cells; Isotype Control Antibody (orange line): Rabbit IgG. Secondary Antibody : Goat anti-rabbit IgG-AF647 Dilution: 1μg /test. Protocol The cells were fixed with 4% PFA (10min at room temperature) and then permeabilized with 90% ice-cold methanol for

Important Note: This product as supplied is intended for research use only, not for use in human, therapeutic or diagnostic applications.

Goat Anti-Rabbit IgG, Cy3 conjugated(bs-0295G-Cy3)used at 1:200 dilution for 40 minutes at 37°C. DAPI(5ug/ml,blue,C-0033) was used to stain the cell nuclei

20 min at -20°C. The cells were then incubated in 5%BSA to block non-specific protein-protein interactions for 30 min at at room temperature .Cells stained with Primary Antibody for 30 min at room temperature. The secondary antibody used for 40 min at room temperature. Acquisition of 20,000 events was performed.

---

## — SELECTED CITATIONS —

- **[IF=21.8]** Sakano Yoshihiro. et al. SIRP $\alpha$  engagement regulates ILC2 effector function and alleviates airway hyperreactivity via modulating energy metabolism. CELL MOL IMMUNOL. 2024 Aug;;1-17 FCM ;Human. 39160226
- **[IF=14.7]** Yingying Zhao. et al.A glucose-enriched lung pre-metastatic niche triggered by matrix stiffness-tuned exosomal miRNAs in hepatocellular carcinoma.nature communications .2025 Feb 18;16(1):1736. Western blot ;. 39966385
- **[IF=6.691]** Cao, Yaochen. et al. Neurorescuing effect of Cinacalcet against hypercalcemia-induced nerve injury in chronic kidney disease via TRAF2/cIAP1/KLF2/SERPINA3 signal axis. CELL BIOL TOXICOL. 2022 May;;1-17 WB,IHC ;Mouse. 35635602
- **[IF=6.548]** Wang, Yiyi. et al. mTOR contributes to endothelium-dependent vasorelaxation by promoting eNOS expression and preventing eNOS uncoupling. COMMUN BIOL. 2022 Jul;5(1):1-14 WB ;Human. 35869262
- **[IF=6.4]** Jeremy M Shea. et al. Microglia aging in the hippocampus advances through intermediate states that drive activation and cognitive decline. ELIFE. 2025 四月 29 IHC ;Mouse. 40298588