

**bs-22921R****[ Primary Antibody ]****MRas Rabbit pAb****BioSS**  
**ANTIBODIES**

www.bioss.com.cn

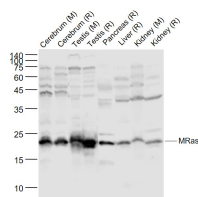
sales@bioss.com.cn

techsupport@bioss.com.cn

400-901-9800

**DATASHEET**

<b>Host:</b> Rabbit	<b>Isotype:</b> IgG	<b>Applications:</b> WB (1:500-2000)
<b>Clonality:</b> Polyclonal		<b>Reactivity:</b> Mouse, Rat
<b>GeneID:</b> 17532	<b>SWISS:</b> O08989	
<b>Target:</b> MRas		
<b>Immunogen:</b> KLH conjugated synthetic peptide derived from mouse MRas: 201-259/259.		<b>Predicted MW.:</b> 23 kDa
<b>Purification:</b> affinity purified by Protein A		<b>Subcellular Location:</b> Cell membrane ,Cytoplasm
<b>Concentration:</b> 1mg/ml		
<b>Storage:</b> 0.01M TBS (pH7.4) with 1% BSA, 0.02% Proclin300 and 50% Glycerol. Shipped at 4°C. Store at -20°C for one year. Avoid repeated freeze/thaw cycles.		
<b>Background:</b> MRas is a member of the RAS superfamily of GTP-binding proteins which are membrane-anchored, intracellular signal transducers responsible for a variety of normal cellular functions. They are oncogenically activated in a significant fraction of tumors. MRas participates in reorganisation of actin cytoskeleton. It is also involved in focal adhesion and can activate MAPK signalling.		

**VALIDATION IMAGES**

Sample: Lane 1: Cerebrum (Mouse) Lysate at 40 ug  
Lane 2: Cerebrum (Rat) Lysate at 40 ug  
Lane 3: Testis (Mouse) Lysate at 40 ug  
Lane 4: Testis (Rat) Lysate at 40 ug  
Lane 5: Pancreas (Rat) Lysate at 40 ug  
Lane 6: Liver (Rat) Lysate at 40 ug  
Lane 7: Kidney (Mouse) Lysate at 40 ug  
Lane 8: Kidney (Rat) Lysate at 40 ug  
Primary: Anti-MRas (bs-22921R) at 1/1000 dilution  
Secondary: IRDye800CW Goat Anti-Rabbit IgG at 1/20000 dilution  
Predicted band size: 21 kD  
Observed band size: 21 kD