

**bsm-41476M**

**[ Primary Antibody ]**

## SARS-CoV-2 (2019-nCoV) Spike S1 Mouse mAb

**BioSS**  
ANTIBODIES

www.bioss.com.cn

sales@bioss.com.cn

techsupport@bioss.com.cn

400-901-9800

### — DATASHEET —

**Host:** Mouse

**Isotype:** IgG1

**Clonality:** Monoclonal

**CloneNo.:** 3C7

**Target:** SARS-CoV-2 (2019-nCoV) Spike S1

**Immunogen:** Recombinant SARS-CoV-2 Spike S1 Protein: 14-685/1273.

**Purification:** affinity purified by Protein A

**Concentration:** Lot Dependent

**Storage:** Size : 100ug  
0.01M PBS (pH7.4).  
Size : 200ug (PBS only)  
0.01M PBS  
Shipped at 4°C. Store at -20°C for one year. Avoid repeated freeze/thaw cycles.

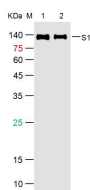
**Background:** The SARS-CoV-2 spike (S) protein is the target of vaccine design efforts to end the COVID-19 pandemic. Despite a low mutation rate, isolates with the D614G substitution in the S protein appeared early during the pandemic, and are now the dominant form worldwide. Here, we analyze the D614G mutation in the context of a soluble S ectodomain construct.

**Applications:** WB (1:500-2000)

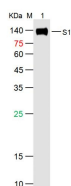
**Reactivity:** Mouse, Virus, SARS-CoV-2

**Predicted MW.:** 140 kDa

### — VALIDATION IMAGES —



Sample: Lane 1: SARS-CoV-2 S1 Protein (E484Q,L452R,D614G,P681R) at 500ng Lane 2: SARS-CoV-2 S1 Protein (L18F,T20N,P26S,D138Y,R190S,K417T,E484K,N501Y,D614G,H655Y) at 500ng Primary: Mouse Anti-SARS-CoV-2 Spike S1 Protein Antibody at 1/1000 dilution Secondary: IRDye800CW Goat Anti-Mouse IgG at 1/20000 dilution Predicted band size: 77kD Observed band size: kD



Sample: Lane 1: SARS-CoV-2 S1 Protein (His-Avi,HEK293) at 500ng Primary: Mouse Anti-SARS-CoV-2 Spike S1 Protein Antibody at 1/1000 dilution Secondary: IRDye800CW Goat Anti-Mouse IgG at 1/20000 dilution Predicted band size: 78kD Observed band size: kD