

bs-2655R**[Primary Antibody]****LTB4-R2 Rabbit pAb****Bioss**
ANTIBODIES

www.bioss.com.cn

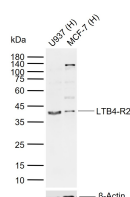
sales@bioss.com.cn

techsupport@bioss.com.cn

400-901-9800

— DATASHEET —

Host: Rabbit Clonality: Polyclonal GeneID: 56413 Target: LTB4-R2 Immunogen: KLH conjugated synthetic peptide derived from human LTB4-R2: 25-120/389. < Extracellular > Purification: affinity purified by Protein A Concentration: 1mg/ml Storage: 0.01M TBS (pH7.4) with 1% BSA, 0.02% Proclin300 and 50% Glycerol. Shipped at 4°C. Store at -20°C for one year. Avoid repeated freeze/thaw cycles. Background: Low-affinity receptor for leukotrienes including leukotriene B4. Mediates chemotaxis of granulocytes and macrophages. The response is mediated via G-proteins that activate a phosphatidylinositol-calcium second messenger system. The rank order of affinities for the leukotrienes is LTB4 > 12-epi-LTB4 > LTB5 > LTB3.	Isotype: IgG SWISS: Q9NPC1	Applications: WB (1:500-2000) Reactivity: Human (predicted: Mouse, Rat, Pig, Cow, Dog, GuineaPig) Predicted MW.: 41 kDa Subcellular Location: Cell membrane
--	---	--

— VALIDATION IMAGES —

Sample: Lane 1: Human U937 cell lysates Lane 2: Human MCF-7 cell lysates Primary: Anti-LTB4-R2 (bs-2655R) at 1/1000 dilution Secondary: IRDye800CW Goat Anti-Rabbit IgG at 1/20000 dilution Predicted band size: 41 kDa Observed band size: 41 kDa

— SELECTED CITATIONS —

- **[IF=4.57]** Zinn, Sebastian, et al. "The leukotriene B4 receptors BLT1 and BLT2 form an antagonistic sensitizing system in peripheral sensory neurons." Journal of Biological Chemistry (2017): jbc-M116. IHC ;="Mouse". 28242764
- **[IF=0]** Wculek, S. Pre-metastatic neutrophils directly support highly tumourigenic breast cancer cells during lung metastasis via a leukotriene-ERK1/2 axis. Diss. UCL (University College London), 2016. FCM ;="Mouse". Diss.UCL(UniversityCollegeLondon),2016.