

bs-2651R**[Primary Antibody]**

Bioss
ANTIBODIES

www.bioss.com.cn

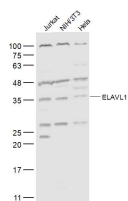
sales@bioss.com.cn

techsupport@bioss.com.cn

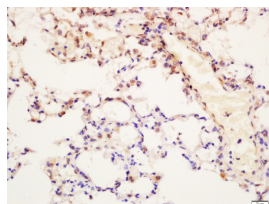
400-901-9800

ELAVL1 Rabbit pAb**— DATASHEET —**

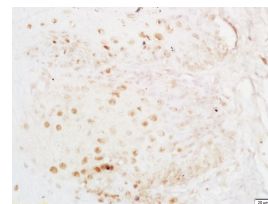
Host: Rabbit	Isotype: IgG	Applications: WB (1:500-2000) IHC-P (1:100-500) IHC-F (1:100-500) IF (1:100-500) Flow-Cyt (2ug/Test) Reactivity: Human, Mouse (predicted: Rat, Pig, Sheep, Cow, Chicken, Dog) Predicted MW.: 36 kDa Subcellular Location: Cytoplasm ,Nucleus
Clonality: Polyclonal		
GeneID: 1994	SWISS: Q15717	
Target: ELAVL1		
Immunogen: KLH conjugated synthetic peptide derived from human ELAVL1: 251-326/326.		
Purification: affinity purified by Protein A		
Concentration: 1mg/ml		
Storage: 0.01M TBS (pH7.4) with 1% BSA, 0.02% Proclin300 and 50% Glycerol. Shipped at 4°C. Store at -20°C for one year. Avoid repeated freeze/thaw cycles.		
Background: The protein encoded by this gene is a member of the ELAVL protein family. This encoded protein contains 3 RNA-binding domains and binds cis-acting AU-rich elements. It destabilizes mRNAs and thereby regulates gene expression. [provided by RefSeq].		

— VALIDATION IMAGES —

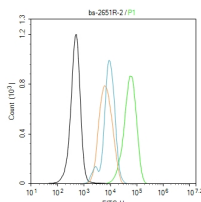
Sample: Jurkat(Human) Cell Lysate at 30 ug
 NIH/3T3(Mouse) Cell Lysate at 30 ug
 HeLa(Human) Cell Lysate at 30 ug
 Primary: Anti-ELAVL1 (bs-2651R) at 1/500 dilution
 Secondary: IRDye800CW Goat Anti-Rabbit IgG at 1/20000 dilution
 Predicted band size: 36 kD
 Observed band size: 36 kD



Tissue/cell: mouse lung tissue; 4% Paraformaldehyde-fixed and paraffin-embedded; Antigen retrieval: citrate buffer (0.01M, pH 6.0), Boiling bathing for 15min; Block endogenous peroxidase by 3% Hydrogen peroxide for 30min; Blocking buffer (normal goat serum, C-0005) at 37°C for 20 min; Incubation: Anti-ELAVL1 Polyclonal Antibody, Unconjugated(bs-2651R) 1:200, overnight at 4°C, followed by conjugation to the secondary antibody(SP-0023) and DAB(C-0010) staining



Tissue/cell: human carcinoma; 4% Paraformaldehyde-fixed and paraffin-embedded; Antigen retrieval: citrate buffer (0.01M, pH 6.0), Boiling bathing for 15min; Block endogenous peroxidase by 3% Hydrogen peroxide for 30min; Blocking buffer (normal goat serum, C-0005) at 37°C for 20 min; Incubation: Anti-ELAVL1 Polyclonal Antibody, Unconjugated(bs-2651R) 1:200, overnight at 4°C, followed by conjugation to the secondary antibody(SP-0023) and DAB(C-0010) staining



Blank control (black line) :HeLa. Primary Antibody (green line): Rabbit Anti-ELAVL1 antibody (bs-2651R) Dilution:2ug/Test; Secondary Antibody (white/blue line) : Goat anti-rabbit IgG-FITC Dilution: 0.5ug/Test. Isotype control (orange line) : Normal Rabbit IgG
 Protocol The cells were fixed with 4% PFA (10min at room temperature) and then permeabilized with 90% ice-cold methanol for 20 min at -20°C. The cells were then incubated in

Important Note: This product as supplied is intended for research use only, not for use in human, therapeutic or diagnostic applications.

5%BSA to block non-specific protein-protein interactions for 30 min at room temperature
.Cells stained with Primary Antibody for 30 min at room temperature. The secondary antibody used for 40 min at room temperature.
Acquisition of 20,000 events was performed.

— SELECTED CITATIONS —

- **[IF=11.161]** Du, Yanhua. et al. SOCS7/HuR/FOXO1 signaling axis inhibited high-grade serous ovarian carcinoma progression. J EXP CLIN CANC RES. 2022 Dec;41(1):1-16 IHC ;Human. 35624501
- **[IF=2.795]** Akira Wagatsuma et al. Cobalt chloride, a chemical hypoxia-mimicking agent, suppresses myoblast differentiation by downregulating myogenin expression. Mol Cell Biochem. 2020 Jul;470(1-2):199-214. WB ;Human. 32451753