

KIR2DS4/CD158i Rabbit pAb

Catalog Number: bs-2644R

Target Protein: KIR2DS4/CD158i

Concentration: 1mg/ml

Form: Liquid

Host: Rabbit

Clonality: Polyclonal

Isotype: IgG

Applications: WB (1:500-2000)

Reactivity: Human

Predicted MW: 31 kDa

Entrez Gene: 3809

Swiss Prot: P43632

Source: KLH conjugated synthetic peptide derived from human CD158i: 221-290/290.

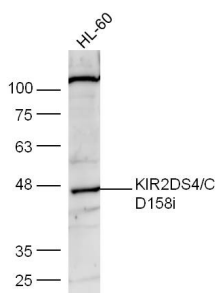
Purification: affinity purified by Protein A

Storage: 0.01M TBS (pH7.4) with 1% BSA, 0.02% Proclin300 and 50% Glycerol.

Shipped at 4°C. Store at -20°C for one year. Avoid repeated freeze/thaw cycles.

Background: The KIR family consists of transmembrane glycoproteins of the Ig superfamily expressed on human NK cells and a subset of human T cells. They are involved in recognition of either MHC class I molecules or unknown ligand on target cells and inhibit cytotoxic activities. KIR2DS4 is an activating receptor of KIR family. KIR2DS4 is a receptor on natural killer (NK) cells for HLA C alleles. It does not inhibit the activity of NK cells.

VALIDATION IMAGES



Sample: HL-60 Cell (Human) Lysate at 30 ug
Primary: Anti-KIR2DS4'CD158i (bs-2644R) at 1/300 dilution
Secondary: IRDye800CW Goat Anti-Rabbit IgG at 1/20000 dilution
Predicted band size: 31 kD
Observed band size: 48 kD

PRODUCT SPECIFIC PUBLICATIONS

[IF=2.38] Mozer-Lisewska, Iwona, et al. "Detection and Significance of Cytotoxic Cell Subsets in Biopsies of HCV-Infected Human Livers." Archivum immunologiae et therapiae experimentalis (2013): 1-8. Other ; ="Human" . 24232187