

bs-2639R**[Primary Antibody]**

BioSS
ANTIBODIES

www.bioss.com.cn

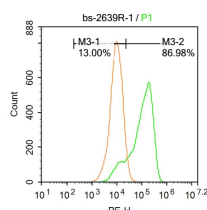
sales@bioss.com.cn

techsupport@bioss.com.cn

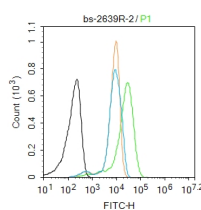
400-901-9800

PTGES2 Rabbit pAb**DATASHEET**

Host: Rabbit Clonality: Polyclonal GeneID: 96979 Target: PTGES2 Immunogen: KLH conjugated synthetic peptide derived from mouse PTGES2: 281-384/384. < Cytoplasmic > Purification: affinity purified by Protein A Concentration: 1mg/ml Storage: 0.01M TBS (pH7.4) with 1% BSA, 0.02% Proclin300 and 50% Glycerol. Shipped at 4°C. Store at -20°C for one year. Avoid repeated freeze/thaw cycles. Background: The protein encoded by this gene is a membrane-associated prostaglandin E synthase, which catalyzes the conversion of prostaglandin H2 to prostaglandin E2. This protein also has been shown to activate the transcription regulated by a gamma-interferon-activated transcription element (GATE). Multiple transcript variants have been found for this gene. [provided by RefSeq].	Isotype: IgG SWISS: Q8BWM0	Applications: Flow-Cyt (1ug/test) Reactivity: Human (predicted: Mouse, Rat, Pig, Cow, Chicken, Dog) Predicted MW.: 43 kDa Subcellular Location: Cell membrane ,Cytoplasm ,Nucleus
--	---	--

VALIDATION IMAGES

Blank control: A549. Primary Antibody (green line): Rabbit Anti-PTGES2 antibody (bs-2639R)
 Dilution: 1µg / 10⁶ cells; Isotype Control Antibody (orange line): Rabbit IgG . Secondary Antibody : Goat anti-rabbit IgG-PE Dilution: 1µg /test. Protocol The cells were fixed with 4% PFA (10min at room temperature) and then permeabilized with 20% PBST for 20 min at -20°C. The cells were then incubated in 5% BSA to block non-specific protein-protein interactions for 30 min at room temperature .Cells stained with Primary Antibody for 30 min at room temperature. The secondary antibody used for 40 min at room temperature. Acquisition of 20,000 events was performed.



Blank control: HepG2. Primary Antibody (green line): Rabbit Anti-PTGES2 antibody (bs-2639R)
 Dilution: 2µg / 10⁶ cells; Isotype Control Antibody (orange line): Rabbit IgG . Secondary Antibody : Goat anti-rabbit IgG-FITC Dilution: 1µg /test. Protocol The cells were fixed with 4% PFA (10min at room temperature) and then permeabilized with 0.1% PBST for 20 min at room temperature. The cells were then incubated in 5% BSA to block non-specific protein-protein interactions for 30 min at room temperature .Cells stained with Primary Antibody for 30 min at room temperature. The secondary antibody used for 40 min at room temperature. Acquisition of 20,000 events was performed.

SELECTED CITATIONS

- **[IF=7.31]** Yu Liu. et al. Inhibition of Prostaglandin E2 Receptor EP3 Attenuates Oxidative Stress and Neuronal Apoptosis Partially by Modulating p38MAPK/FOXO3/Mul1/Mfn2 Pathway after Subarachnoid Hemorrhage in Rats. OXID MED CELL LONGEV. 2022 Dec 09;2022:7727616 WB ;Rat. 36531208
- **[IF=5.7]** Lee Soon-Young. et al. Oleic acid attenuates asthma pathogenesis via Th1/Th2 immune cell modulation, TLR3/4-NF-κB-related inflammation suppression, and intrinsic apoptotic pathway induction. FRONT IMMUNOL. 2024

Important Note: This product as supplied is intended for research use only, not for use in human, therapeutic or diagnostic applications.

Oct;15: WB,IHC ;Mouse. 39421735

- **[IF=5.6]** Soon-Young Lee. et al. Saururus chinensis water-extract effectively controls asthma by ameliorating of Th1/Th2 imbalance and suppressing of NF- κ B/COX-2/PGE2-related inflammation. J FUNCT FOODS. 2024 Jan;112:105930 IHC ;Mouse. 10.1016/j.jff.2023.105930
- **[IF=5.9]** Soon-Young Lee. et al. Ginseng Berry Juice (GBJ) Regulates the Inflammation in Acute Ulcerative Mouse Models and the Major Bioactive Substances Are Ginsenosides Rb3, Rc, Rd, and Re. NUTRIENTS. 2024 Jan;16(7):1031 IHC ;Mouse. 38613064
- **[IF=5.487]** Soon-Young Lee. et al. Korean Red Ginseng affects ovalbumin-induced asthma by modulating IL-12, IL-4, and IL-6 levels and the NF- κ B/COX-2 and PGE2 pathways. J Ginseng Res. 2020 Oct;: IHC ;Mouse. 10.1016/j.jgr.2020.10.001