

**bsm-52503R****[ Primary Antibody ]**

**BioSS**  
ANTIBODIES

www.bioss.com.cn

sales@bioss.com.cn

techsupport@bioss.com.cn

400-901-9800

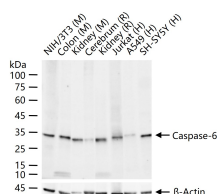
## Caspase-6 Recombinant Rabbit mAb

### — DATASHEET —

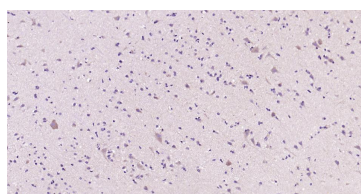
<b>Host:</b> Rabbit	<b>Isotype:</b> IgG
<b>Clonality:</b> Recombinant	<b>CloneNo.:</b> 10F5
<b>GeneID:</b> 839	<b>SWISS:</b> P55212
<b>Target:</b> Caspase-6	
<b>Immunogen:</b> A synthesized peptide derived from human Caspase 6: 150-293/293.	
<b>Purification:</b> affinity purified by Protein A	
<b>Concentration:</b> 1mg/ml	
<b>Storage:</b> 0.01M TBS (pH7.4) with 1% BSA, 0.02% Proclin300 and 50% Glycerol. Shipped at 4°C. Store at -20°C for one year. Avoid repeated freeze/thaw cycles.	
<b>Background:</b> This gene encodes a protein which is a member of the cysteine-aspartic acid protease (caspase) family. Sequential activation of caspases plays a central role in the execution-phase of cell apoptosis. Caspases exist as inactive proenzymes which undergo proteolytic processing at conserved aspartic residues to produce two subunits, large and small, that dimerize to form the active enzyme. This protein is processed by caspases 7, 8 and 10, and is thought to function as a downstream enzyme in the caspase activation cascade. Alternative splicing of this gene results in two transcript variants that encode different isoforms. [provided by RefSeq, Jul 2008]	

**Applications:** WB (1:1000-2000)**IHC-P** (1:100-500)**IHC-F** (1:100-500)**IF** (1:100-500)**Reactivity:** Human, Mouse, Rat**Predicted MW.:** 33 kDa**Subcellular Location:** Cytoplasm ,Nucleus

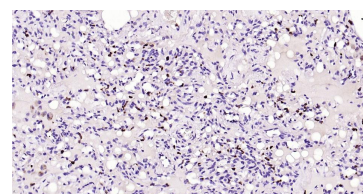
### — VALIDATION IMAGES —



25 ug total protein per lane of various lysates (see on figure) probed with Caspase-6 monoclonal antibody, unconjugated (bsm-52503R) at 1:1000 dilution and 4°C overnight incubation. Followed by conjugated secondary antibody incubation at r.t. for 60 min.



Paraformaldehyde-fixed, paraffin embedded Human Cerebrum; Antigen retrieval by boiling in sodium citrate buffer (pH6.0) for 15 min; Antibody incubation with Caspase-6 Monoclonal Antibody, Unconjugated(bsm-52503R) at 1:200 overnight at 4°C, followed by conjugation to the SP Kit(Rabbit, SP-0023) and DAB (C-0010) staining.



Paraformaldehyde-fixed, paraffin embedded Human Lung Cancer; Antigen retrieval by boiling in sodium citrate buffer (pH6.0) for 15 min; Antibody incubation with Caspase-6 Monoclonal Antibody, Unconjugated(bsm-52503R) at 1:200 overnight at 4°C, followed by conjugation to the SP Kit(Rabbit, SP-0023) and DAB (C-0010) staining.