

bsm-54300R**[Primary Antibody]****CD3 gamma Recombinant Rabbit mAb****Bioss**
ANTIBODIES

www.bioss.com.cn

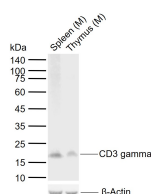
sales@bioss.com.cn

techsupport@bioss.com.cn

400-901-9800

— DATASHEET —

Host: Rabbit	Isotype: IgG	Applications: WB (1:500-1000) IHC-P (1:100-500) IHC-F (1:50-200) IF (1:100-500) Flow-Cyt (1:50-200) Reactivity: Human, Mouse Predicted MW.: 20 kDa Subcellular Location: Cell membrane
Clonality: Recombinant	CloneNo.: 2B11	
GeneID: 917	SWISS: P09693	
Target: CD3 gamma		
Purification: affinity purified by Protein A		
Concentration: 1mg/ml		
Storage: 0.01M TBS (pH7.4) with 1% BSA, 0.02% Proclin300 and 50% Glycerol. Shipped at 4°C. Store at -20°C for one year. Avoid repeated freeze/thaw cycles.		
Background: The protein encoded by this gene is the CD3-gamma polypeptide, which together with CD3-epsilon, -delta and -zeta, and the T-cell receptor alpha/beta and gamma/delta heterodimers, forms the T-cell receptor-CD3 complex. This complex plays an important role in coupling antigen recognition to several intracellular signal-transduction pathways. The genes encoding the epsilon, gamma and delta polypeptides are located in the same cluster on chromosome 11. Defects in this gene are associated with T cell immunodeficiency. [provided by RefSeq, Jul 2008]		

— VALIDATION IMAGES —

Sample: Lane 1: Mouse Spleen tissue lysates
Lane 2: Mouse Thymus tissue lysates Primary:
Anti-CD3 gamma (bsm-54300R) at 1/1000
dilution Secondary: IRDye800CW Goat Anti-
Rabbit IgG at 1/20000 dilution Predicted band
size: 20 kDa Observed band size: 17 kDa

— SELECTED CITATIONS —

- **[IF=7.3]** Saranchova Iryna. et al. A novel type-2 innate lymphoid cell-based immunotherapy for cancer. FRONT IMMUNOL. 2024 Mar;15: FCM ;Mouse. 38524132