

bs-6465R**[Primary Antibody]****phospho-Girdin (Ser1417) Rabbit pAb****BioSS**
ANTIBODIES

www.bioss.com.cn

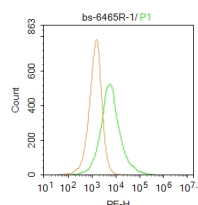
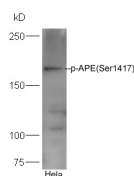
sales@bioss.com.cn

techsupport@bioss.com.cn

400-901-9800

— DATASHEET —

Host: Rabbit Clonality: Polyclonal GeneID: 55704 Target: Girdin (Ser1417) Immunogen: KLH conjugated synthesised phosphopeptide derived from human APE around the phosphorylation site of Ser1417: QK(p-S)LT. Purification: affinity purified by Protein A Concentration: 1mg/ml Storage: 0.01M TBS (pH7.4) with 1% BSA, 0.02% Proclin300 and 50% Glycerol. Shipped at 4°C. Store at -20°C for one year. Avoid repeated freeze/thaw cycles. Background: This gene encodes a member of the Girdin family of coiled-coil domain containing proteins. The encoded protein is an actin-binding protein that is activated by the serine/threonine kinase Akt and plays a role in cytoskeleton remodeling and cell migration. The encoded protein also enhances Akt signaling by mediating phosphoinositide 3-kinase (PI3K)-dependent activation of Akt by growth factor receptor tyrosine kinases and G protein-coupled receptors. Increased expression of this gene and phosphorylation of the encoded protein may play a role in cancer metastasis. Alternatively spliced transcript variants encoding multiple isoforms have been observed for this gene. [provided by RefSeq, Dec 2011]	Isotype: IgG SWISS: Q3V6T2	Applications: WB (1:500-2000) Flow-Cyt (1ug/test) Reactivity: Human (predicted: Mouse, Rat, Pig, Cow, Dog, Horse) Predicted MW.: 206 kDa Subcellular Location: Cell membrane ,Cytoplasm
---	---	---

— VALIDATION IMAGES —

Sample: HeLa Cell (Human) Lysate at 40 ug
Primary: Anti-phospho-APE(Ser1417) (bs-6465R)
at 1/300 dilution Secondary: HRP conjugated
Goat-Anti-rabbit IgG (bs-0295G-HRP) at 1/5000
dilution Predicted band size: 206 kD Observed
band size: 206 kD

Blank control: HeLa. Primary Antibody (green
line): Rabbit Anti-phospho-APE(Ser1417)
antibody (bs-6465R) Dilution: 1µg /10⁶ cells;
Isotype Control Antibody (orange line): Rabbit
IgG . Secondary Antibody : Goat anti-rabbit IgG-
PE Dilution: 1µg /test. Protocol The cells were
fixed with 4% PFA (10min at room
temperature)and then permeabilized with 20%
PBST for 20 min at room temperature. The cells
were then incubated in 5% BSA to block non-
specific protein-protein interactions for 30 min
at room temperature .Cells stained with
Primary Antibody for 30 min at room
temperature. The secondary antibody used for
40 min at room temperature. Acquisition of
20,000 events was performed.

— SELECTED CITATIONS —

- **[IF=3.329]** Pan S et al. MiR-328-3p inhibits cell proliferation and metastasis in colorectal cancer by targeting Girdin and inhibiting the PI3K/Akt signaling pathway. Exp Cell Res. 2020 May 1;390(1):111939. WB ;human. 32142853

Important Note: This product as supplied is intended for research use only, not for use in human, therapeutic or diagnostic applications.