

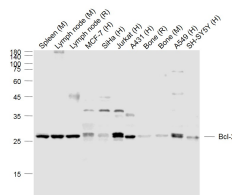
**bs-34012R****[ Primary Antibody ]****Bcl-2 Rabbit pAb****Bioss**  
ANTIBODIES

www.bioss.com.cn

sales@bioss.com.cn

techsupport@bioss.com.cn

400-901-9800

**DATASHEET****Host:** Rabbit**Isotype:** IgG**Clonality:** Polyclonal**GeneID:** 596**SWISS:** P10415**Target:** Bcl-2**Immunogen:** KLH conjugated synthetic peptide derived from human Bcl-2 : 21-120/236.**Purification:** affinity purified by Protein A**Concentration:** 1mg/ml**Storage:** Liquid in PBS containing 50% Glycerol, 0.5% BSA and 0.02% Proclin300.  
Shipped at 4°C. Store at -20°C for one year. Avoid repeated freeze/thaw cycles.**Background:** The Bcl-2 gene was isolated at the chromosomal breakpoint of t(14;18)-bearing follicular B cell lymphomas(1,2).Bcl-2 blocks cell death following a variety of stimuli and confers a death-sparing effect to certain hematopoietic cell lines following growth factor withdrawal (3,5).Bcl-2 appears to function in several subcellular locations yet lacks any known motifs that would confer insight into its mechanism of action (6,7).A more recently identified protein,designated Bax p21(i.e., Bcl-associated X protein ),has extensive amino acid homology with Bcl-2 and both homodimerizes and forms heterodimers with Bcl-2(8). Overexpression of Bax accelerates apoptotic death induced by cytokine deprivation in an IL-3 dependent cell line and Bax also counters the death repressor activity of Bcl-2(8).**Applications:** WB (1:500-2000)**IHC-P** (1:100-500)**IHC-F** (1:100-300)**IF** (1:200-1000)**ICC/IF** (1:100-500)**ELISA** (1:10000)**Reactivity:** Human, Mouse, Rat**Predicted MW.:** 26 kDa**Subcellular Location:** Cell membrane ,Cytoplasm ,Nucleus**VALIDATION IMAGES**

Sample: Lane 1: Spleen (Mouse) Lysate at 40 ug  
 Lane 2: Lymph node (Mouse) Lysate at 40 ug  
 Lane 3: Lymph node (Rat) Lysate at 40 ug Lane 4:  
 MCF-7 (Human) Cell Lysate at 30 ug Lane 5: SiHa  
 (Human) Cell Lysate at 30 ug Lane 6: Jurkat  
 (Human) Cell Lysate at 30 ug Lane 7: A431  
 (Human) Cell Lysate at 30 ug Lane 8: Bone (Rat)  
 Lysate at 40 ug Lane 9: Bone (Mouse) Lysate at  
 40 ug Lane 10: A549 (Human) Cell Lysate at 30 ug  
 Lane 11: SH-SY5Y (Human) Cell Lysate at 30 ug  
 Primary: Anti-Bcl-2 (bs-34012R) at 1/1000  
 dilution Secondary: IRDye800CW Goat Anti-  
 Rabbit IgG at 1/20000 dilution Predicted band  
 size: 26 kD Observed band size: 26 kD

**SELECTED CITATIONS**

- **[IF=7.5]** Yu Zhou. et al. Human amniotic mesenchymal stromal cell-derived exosomes promote neuronal function by inhibiting excessive apoptosis in a hypoxia/ischemia-induced cerebral palsy model: A preclinical study. BIOMED

Important Note: This product as supplied is intended for research use only, not for use in human, therapeutic or diagnostic applications.

PHARMACOTHER. 2024 Apr;173:116321 WB ;Rat. 38394849

- **[IF=6.7]** Jian Shi. et al. Mechanistic elucidation of QiJu-DiHuang Wan in management of age-related dry eye through metabolomics and network pharmacology. PHYTOMEDICINE. 2024 Sep;132:155884 WB ;Rat. 39053245
- **[IF=6.196]** Cheng He. et al. Crosstalk of renal cell carcinoma cells and tumor-associated macrophages aggravates tumor progression by modulating muscleblind-like protein 2/B-cell lymphoma 2/beclin 1-mediated autophagy. CYTOTHERAPY. 2022 Oct; WB ;Human. 36244911
- **[IF=3.9]** Tang Yu. et al. Chlorogenic acid attenuates oxidative damage in rat lacrimal gland epithelial cells via PI3K/AKT/FoxO3 signaling: network pharmacology and experimental evidence. SCI REP-UK. 2025 May;15(1):1-15 WB ;Rat. 40447676
- **[IF=4.36]** Pengcheng Zhou. et al. Tiao-bu-fei-shen formula promotes downregulation of the caveolin 1-p38 mapk signaling pathway in COPD - Associated tracheobronchomalacia cell model. J ETHNOPHARMACOL. J Ethnopharmacol. 2022 Apr;115256 WB ;Rat. 35367574