

bs-6079R**[Primary Antibody]****BioSS**
ANTIBODIES

www.bioss.com.cn

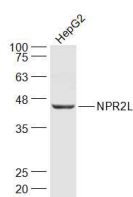
sales@bioss.com.cn

techsupport@bioss.com.cn

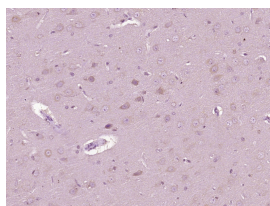
400-901-9800

G21 protein/NPR2L Rabbit pAb**— DATASHEET —**

Host: Rabbit	Isotype: IgG	Applications: WB (1:500-2000)
Clonality: Polyclonal		IHC-P (1:100-500)
GeneID: 10641	SWISS: Q8WTW4	IHC-F (1:100-500)
Target: G21 protein/NPR2L		IF (1:100-500)
Immunogen: KLH conjugated synthetic peptide derived from human NPR2L: 221-320/380.		Reactivity: Human, Rat (predicted: Mouse, Rabbit, Pig, Cow, Horse)
Purification: affinity purified by Protein A		
Concentration: 1mg/ml		Predicted MW.: 44 kDa
Storage: 0.01M TBS (pH7.4) with 1% BSA, 0.02% Proclin300 and 50% Glycerol. Shipped at 4°C. Store at -20°C for one year. Avoid repeated freeze/thaw cycles.		Subcellular Location: Cell membrane ,Cytoplasm
Background: NPR2L is homologous to yeast nitrogen permease and is a candidate tumor suppressor, being a negative regulator of cell cycle. Most abundant in skeletal muscle, followed by brain, liver, and pancreas, with lower amounts in lung, kidney, placenta, and heart. Expressed in most lung cancer cell lines tested. There are two isoforms, produced by alternative splicing.		

— VALIDATION IMAGES —

Sample: HepG2(Human) Cell Lysate at 30 ug
 Primary: Anti-NPR2L (bs-6079R) at 1/1000
 dilution Secondary: IRDye800CW Goat Anti-Rabbit IgG at 1/20000 dilution Predicted band size: 44 kD Observed band size: 44 kD



Paraformaldehyde-fixed, paraffin embedded (Rat brain); Antigen retrieval by boiling in sodium citrate buffer (pH6.0) for 15min; Block endogenous peroxidase by 3% hydrogen peroxide for 20 minutes; Blocking buffer (normal goat serum) at 37°C for 30min; Antibody incubation with (G21 protein/NPR2L) Polyclonal Antibody, Unconjugated (bs-6079R) at 1:400 overnight at 4°C, followed by operating according to SP Kit(Rabbit) (sp-0023) instructions and DAB staining.