

bs-6075R**[Primary Antibody]****MTSS1 Rabbit pAb****BioSS**
ANTIBODIES

www.bioss.com.cn

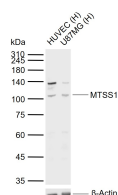
sales@bioss.com.cn

techsupport@bioss.com.cn

400-901-9800

— DATASHEET —

Host: Rabbit	Isotype: IgG	Applications: WB (1:500-2000)
Clonality: Polyclonal		Reactivity: Human, Mouse (predicted: Rat, Rabbit, Cow, Chicken, Dog, Horse)
GeneID: 9788	SWISS: O43312	
Target: MTSS1		Predicted MW.: 82 kDa
Immunogen: KLH conjugated synthetic peptide derived from human MTSS1: 101-200/755.		Subcellular Location: Cytoplasm
Purification: affinity purified by Protein A		
Concentration: 1mg/ml		
Storage: 0.01M TBS (pH7.4) with 1% BSA, 0.02% Proclin300 and 50% Glycerol. Shipped at 4°C. Store at -20°C for one year. Avoid repeated freeze/thaw cycles.		
Background: May be related to cancer progression or tumor metastasis in a variety of organ sites, most likely through an interaction with the actin cytoskeleton.		

— VALIDATION IMAGES —

Sample: Lane 1: Human HUVEC cell lysates Lane
2: Human U87MG cell lysates Primary: Anti-
MTSS1 (bs-6075R) at 1/1000 dilution Secondary:
IRDye800CW Goat Anti-Rabbit IgG at 1/20000
dilution Predicted band size: 82 kDa Observed
band size: 105 kDa

— SELECTED CITATIONS —

- **[IF=2.91]** Chen, Qiang, et al. "Microarray analyses reveal liver metastasis-related genes in metastatic colorectal cancer cell model." Journal of cancer research and clinical oncology (2013): 1-10. WB ;="Human". 23563852
- **[IF=2.894]** TingLu Ye. et al. 5-aminolevulinic acid photodynamic therapy inhibits invasion and metastasis of SCL-1 cells probably via MTSS1 and p63 gene related pathways. Photodiagn Photodyn. 2020 Dec;32:102039 FCM ;Human. 33017656