

bs-6073R**[Primary Antibody]****MFSD2A Rabbit pAb****Bioss**
ANTIBODIES

www.bioss.com.cn

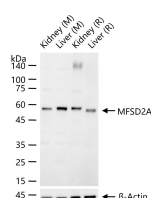
sales@bioss.com.cn

techsupport@bioss.com.cn

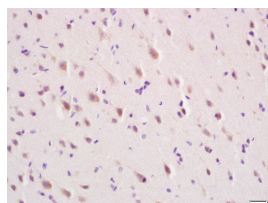
400-901-9800

— DATASHEET —

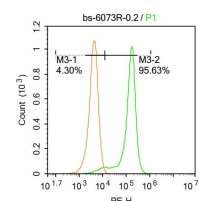
Host: Rabbit	Isotype: IgG	Applications: WB (1:500-2000) IHC-P (1:100-500) IHC-F (1:100-500) IF (1:100-500) Flow-Cyt (0.2ug/test)
Clonality: Polyclonal		Reactivity: Human, Mouse, Rat (predicted: Rabbit, Pig, Cow, Chicken, Dog, Horse)
GeneID: 84879	SWISS: Q8NA29	Predicted MW.: 60 kDa
Target: MFSD2A		Subcellular Location: Cell membrane ,Cytoplasm
Immunogen: KLH conjugated synthetic peptide derived from human MFSD2A: 331-430/543.		
Purification: affinity purified by Protein A		
Concentration: 1mg/ml		
Storage: 0.01M TBS (pH7.4) with 1% BSA, 0.02% Proclin300 and 50% Glycerol. Shipped at 4°C. Store at -20°C for one year. Avoid repeated freeze/thaw cycles.		
Background: MFSD2 is a 543 amino acid multi-pass membrane protein of the endoplasmic reticulum that is involved in beta-adrenergic signaling during thermogenesis. Existing as three alternatively spliced isoforms, MFSD2 plays a role in G1 regulation and is encoded by a gene that maps to human chromosome 1p34.2. Human chromosome 1 spans 260 million base pairs, contains over 3,000 genes, comprises nearly 8% of the human genome and houses a large number of disease-associated genes, including those that are involved in familial adenomatous polyposis, Stickler syndrome, Parkinson' s disease, Gaucher disease, schizophrenia and Usher syndrome.		

— VALIDATION IMAGES —

25 ug total protein per lane of various lysates (see on figure) probed with MFSD2A polyclonal antibody, unconjugated (bs-6073R) at 1:1000 dilution and 4°C overnight incubation. Followed by conjugated secondary antibody incubation at r.t. for 60 min.



Tissue/cell: rat brain tissue; 4% Paraformaldehyde-fixed and paraffin-embedded; Antigen retrieval: citrate buffer (0.01M, pH 6.0), Boiling bathing for 15min; Block endogenous peroxidase by 3% Hydrogen peroxide for 30min; Blocking buffer (normal goat serum,C-0005) at 37 °C for 20 min; Incubation: Anti-MFSD2A Polyclonal Antibody, Unconjugated(bs-6073R) 1:200, overnight at 4 °C, followed by conjugation to the secondary antibody(SP-0023) and DAB(C-0010) staining



Blank control:Molt-4. Primary Antibody (green line): Rabbit Anti-MFSD2A antibody (bs-6073) Dilution: 0.2μg /10⁶ cells; Isotype Control Antibody (orange line): Rabbit IgG . Secondary Antibody : Goat anti-rabbit IgG-PE Dilution: 0.2μg /test. Protocol The cells were fixed with 4% PFA (10min at room temperature)and then permeabilized with 20% PBST for 20 min at -20°C. The cells were then incubated in 5%BSA to block non-specific protein-protein interactions for 30 min at at room temperature .Cells stained with Primary Antibody for 30 min at room temperature. The secondary antibody used for 40 min at room temperature. Acquisition of 20,000 events was performed.

— SELECTED CITATIONS —

- **[IF=5.168]** Díaz-Carballo et al. Cytotoxic stress induces transfer of mitochondria-associated human endogenous retroviral RNA and proteins between cancer cells. (2017) Oncotarget. 8:95945-95964 FCM ;Human. 29221178
- **[IF=3.8]** Hu Di. et al. Perihematoma Neurovascular Protection: Blocking HSP90 Reduces Blood Infiltration Associated

Important Note: This product as supplied is intended for research use only, not for use in human, therapeutic or diagnostic applications.

with Inflammatory Effects Following Intracerebral Hemorrhage in Rats. TRANSL STROKE RES. 2024 Sep;;1-13 WB ;Rat. 39230786

- **[IF=1.862]** Xiaohui Chang. et al. Imatinib reduces the fertility of male mice by penetrating the blood-testis barrier and inducing spermatogonia apoptosis. Reprod Biol. 2021 Sep;21:100527 WB,IHC ;Mouse. 34147007