

bsm-60641R**[Primary Antibody]****BioSS**
ANTIBODIES

www.bioss.com.cn

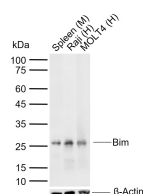
sales@bioss.com.cn

techsupport@bioss.com.cn

400-901-9800

Bim Recombinant Rabbit mAb**— DATASHEET —**

Host: Rabbit Clonality: Recombinant GeneID: 10018 Target: Bim Purification: affinity purified by Protein A Concentration: 1mg/ml Storage: 0.01M TBS (pH7.4) with 1% BSA, 0.02% Proclin300 and 50% Glycerol. Shipped at 4°C. Store at -20°C for one year. Avoid repeated freeze/thaw cycles. Background: Bim, Bcl-2 interacting mediator of cell death, is a pro-apoptotic protein belonging to the Bcl2 family of proteins containing a Bcl2 homology domain 3 (BH3). It is proapoptotic and exerts its effects by interacting with prosurvival members of the Bcl2 family like Bcl2, BclxL and Bclw. Bim is sequestered in an inactive conformation through binding to the microtubule-associated dynein motor complex. Certain apoptotic stimuli release Bim from microtubules, allowing inhibitory binding to anti-apoptotic Bcl-2 family members and subsequent initiation of apoptosis.	Isotype: IgG SWISS: O43521	Applications: WB (1:500-1000) Reactivity: Human, Mouse (predicted: Rat) Predicted MW.: 22 kDa Subcellular Location: Cell membrane ,Cytoplasm
--	---	---

— VALIDATION IMAGES —

Sample: Lane 1: Mouse Spleen tissue lysates
 Lane 2: Human Raji cell lysates Lane 3: Human MOLT4 cell lysates
 Primary: Anti-Bim (bsm-60641R) at 1/1000 dilution
 Secondary: IRDye800CW Goat Anti-Rabbit IgG at 1/20000 dilution
 Predicted band size: 22 kDa Observed band size: 26 kDa