

bs-6064R**[Primary Antibody]****Bioss**
ANTIBODIES

www.bioss.com.cn

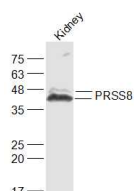
sales@bioss.com.cn

techsupport@bioss.com.cn

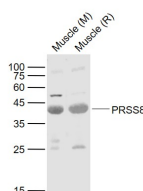
400-901-9800

PRSS8 Rabbit pAb**— DATASHEET —**

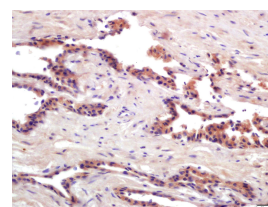
Host: Rabbit	Isotype: IgG	Applications: WB (1:500-2000) IHC-P (1:100-500) IHC-F (1:100-500) IF (1:100-500) Reactivity: Human, Mouse, Rat (predicted: Pig, Cow, Dog) Predicted MW.: 30/33 kDa Subcellular Location: Secreted ,Extracellular matrix ,Cell membrane
Clonality: Polyclonal		
GeneID: 5652	SWISS: Q16651	
Target: PRSS8		
Immunogen: KLH conjugated synthetic peptide derived from human PRSS8: 65-165/343.		
Purification: affinity purified by Protein A		
Concentration: 1mg/ml		
Storage: 0.01M TBS (pH7.4) with 1% BSA, 0.02% Proclin300 and 50% Glycerol. Shipped at 4°C. Store at -20°C for one year. Avoid repeated freeze/thaw cycles.		
Background: PRSS8 is a member of the trypsin family of serine proteases. It can be found in seminal fluid and is highly expressed in prostate epithelia. The proprotein is cleaved to produce a light chain and a heavy chain which are associated by a disulfide bond. The carboxyterminal region contains a GPI anchor sequence, which anchors prostaticin to the cell surface. Phospholipase activity is thought to liberate prostaticin from the cell, and cleavage of the linker region also releases prostaticin. PRSS8 has been proposed as a marker for ovarian cancer, where it is up-regulated, a marker for androgen-refractory prostate cancer, where it is down-regulated, and as an inhibitor of invasiveness in breast cancer.		

— VALIDATION IMAGES —

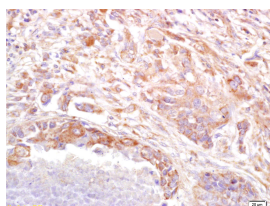
Sample: Kidney (Mouse) Lysate at 40 ug Primary: Anti-PRSS8 (bs-6064R) at 1/1000 dilution
Secondary: IRDye800CW Goat Anti-Rabbit IgG at 1/20000 dilution Predicted band size: 30/33 kD
Observed band size: 40/43 kD



Sample: Lane 1: Muscle (Mouse) Lysate at 40 ug
Lane 2: Muscle (Rat) Lysate at 40 ug Primary: Anti- PRSS8 (bs-6064R) at 1/1000 dilution
Secondary: IRDye800CW Goat Anti-Rabbit IgG at 1/20000 dilution Predicted band size: 37-40 kD
Observed band size: 40 kD



Tissue/cell: human prostate carcinoma; 4% Paraformaldehyde-fixed and paraffin-embedded; Antigen retrieval: citrate buffer (0.01M, pH 6.0), Boiling bathing for 15min; Block endogenous peroxidase by 3% Hydrogen peroxide for 30min; Blocking buffer (normal goat serum, C-0005) at 37°C for 20 min; Incubation: Anti-PRSS8 Polyclonal Antibody, Unconjugated(bs-6064R) 1:200, overnight at 4°C, followed by conjugation to the secondary antibody(SP-0023) and DAB(C-0010) staining



Tissue/cell: human lung carcinoma; 4% Paraformaldehyde-fixed and paraffin-embedded; Antigen retrieval: citrate buffer (

Important Note: This product as supplied is intended for research use only, not for use in human, therapeutic or diagnostic applications.

0.01M, pH 6.0), Boiling bathing for 15min; Block endogenous peroxidase by 3% Hydrogen peroxide for 30min; Blocking buffer (normal goat serum,C-0005) at 37°C for 20 min; Incubation: Anti-PRSS8 Polyclonal Antibody, Unconjugated(bs-6064R) 1:200, overnight at 4°C, followed by conjugation to the secondary antibody(SP-0023) and DAB(C-0010) staining