

bs-6052R**[Primary Antibody]****HPRG Rabbit pAb****Bioss**
ANTIBODIES

www.bioss.com.cn

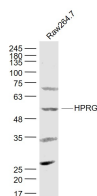
sales@bioss.com.cn

techsupport@bioss.com.cn

400-901-9800

— DATASHEET —

Host: Rabbit	Isotype: IgG	Applications: WB (1:500-2000)
Clonality: Polyclonal		Reactivity: Mouse (predicted: Human, Rat)
GeneID: 3273	SWISS: P04196	
Target: HPRG		Predicted MW.: 58 kDa
Immunogen: KLH conjugated synthetic peptide derived from human HPRG/HRG: 75-180/525.		Subcellular Location: Secreted
Purification: affinity purified by Protein A		
Concentration: 1mg/ml		
Storage: 0.01M TBS (pH7.4) with 1% BSA, 0.02% Proclin300 and 50% Glycerol. Shipped at 4°C. Store at -20°C for one year. Avoid repeated freeze/thaw cycles.		
Background: HRG contains two cystatin-like domains and is located in plasma and platelets. The physiological function is not yet known. It binds heme, dyes and divalent metal ions. It can inhibit rosette formation and interacts with heparin, thrombospondin, and the lysine-binding site of plasminogen. A potential prothrombotic effect of HRG is indicated by the inhibition of fibrinolysis and the reduction of inhibition of coagulation. Mutations in HRG lead to thrombophilia due to abnormal histidine-rich glycoprotein levels.		

— VALIDATION IMAGES —

Sample: Raw264.7 Cell (Mouse) Lysate at 40 ug
Primary: Anti-alpha smooth muscle Actin
(bs-6052R) at 1/300 dilution Secondary:
IRDye800CW Goat Anti-Rabbit IgG at 1/20000
dilution Predicted band size: 58 kD Observed
band size: 58 kD