

bs-6050R**[Primary Antibody]****FSTL1 Rabbit pAb****Bioss**
ANTIBODIES

www.bioss.com.cn

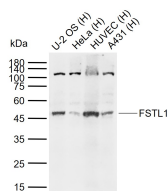
sales@bioss.com.cn

techsupport@bioss.com.cn

400-901-9800

— DATASHEET —

Host: Rabbit	Isotype: IgG	Applications: WB (1:500-2000)
Clonality: Polyclonal		Reactivity: Human (predicted: Mouse, Rat, Rabbit, Cow, Chicken, Dog, Horse)
GeneID: 11167		Predicted MW.: 34 kDa
Target: FSTL1		Subcellular Location: Secreted
Immunogen: KLH conjugated synthetic peptide derived from human FSTL1/FRP: 201-308/308.		
Purification: affinity purified by Protein A		
Concentration: 1mg/ml		
Storage: 0.01M TBS (pH7.4) with 1% BSA, 0.02% Proclin300 and 50% Glycerol. Shipped at 4°C. Store at -20°C for one year. Avoid repeated freeze/thaw cycles.		
Background: TSC-36 is a secreted extracellular glycoprotein. The amino acid sequence of TSC-36 is similar to follistatin, an inhibitor of activin, as it contains a follistatin module. TSC-36 is a heparin-binding protein suggested to have a role in the negative regulation of cellular growth, as its expression is induced in response to TGF- β 1. In addition, TSC-36 is not found in small cell lung cancer (SCLC) cells, a highly aggressive neoplasm, but is detected in some non-small cell lung cancer (NSCLC) cells, a moderately aggressive neoplasm.. May modulate the action of some growth factors on cell proliferation and differentiation. Binds heparin.		

— VALIDATION IMAGES —

Sample: Lane 1: Human U-2 OS cell lysates Lane 2: Human HeLa cell lysates Lane 3: Human HUVEC cell lysates Lane 4: Human A431 cell lysates
Primary: Anti-FSTL1 (bs-6050R) at 1/1000 dilution Secondary: IRDye800CW Goat Anti-Rabbit IgG at 1/20000 dilution Predicted band size: 34 kDa Observed band size: 47 kDa