

bs-6048R

[Primary Antibody]

BioSS
ANTIBODIES

www.bioss.com.cn

sales@bioss.com.cn

techsupport@bioss.com.cn

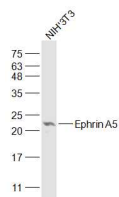
400-901-9800

Ephrin A5 Rabbit pAb

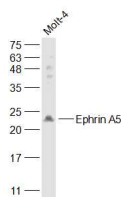
DATASHEET

Host: Rabbit	Isotype: IgG	Applications: WB (1:500-2000) Reactivity: Human, Mouse (predicted: Rat, Pig, Cow, Dog, Horse) Predicted MW.: 24 kDa Subcellular Location: Cell membrane
Clonality: Polyclonal		
GeneID: 1946	SWISS: P52803	
Target: Ephrin A5		
Immunogen: KLH conjugated synthetic peptide derived from human Ephrin A5: 121-228/228.		
Purification: affinity purified by Protein A		
Concentration: 1mg/ml		
Storage: 0.01M TBS (pH7.4) with 1% BSA, 0.02% Proclin300 and 50% Glycerol. Shipped at 4°C. Store at -20°C for one year. Avoid repeated freeze/thaw cycles.		
Background: May function actively to stimulate axon fasciculation. Induces compartmentalized signaling within a caveolae-like membrane microdomain when bound to the extracellular domain of its cognate receptor. This signaling event requires the activity of the Fyn tyrosine kinase.		

VALIDATION IMAGES



Sample: NIH/3T3(Mouse) Cell Lysate at 30 ug
Primary: Anti-Ephrin A5 (bs-6048R) at 1/1000 dilution
Secondary: IRDye800CW Goat Anti-Rabbit IgG at 1/20000 dilution
Predicted band size: 24 kD
Observed band size: 23 kD



Sample: MOLT-4(Human) Cell Lysate at 30 ug
Primary: Anti-Ephrin A5 (bs-6048R) at 1/1000 dilution
Secondary: IRDye800CW Goat Anti-Rabbit IgG at 1/20000 dilution
Predicted band size: 24 kD
Observed band size: 23 kD