

bs-6059R

[Primary Antibody]

IGFBP9 Rabbit pAb

BioSS
ANTIBODIES

www.bioss.com.cn

sales@bioss.com.cn

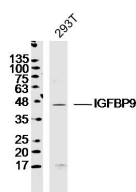
techsupport@bioss.com.cn

400-901-9800

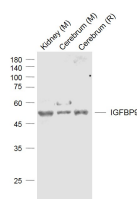
— DATASHEET —

Host: Rabbit	Isotype: IgG	Applications: WB (1:500-2000)
Clonality: Polyclonal		Reactivity: Human, Mouse, Rat
GeneID: 4856	SWISS: P48745	
Target: IGFBP9		
Immunogen: KLH conjugated synthetic peptide derived from human IGFBP9/CCN3: 221-320/357.		Predicted MW.: 35 kDa
Purification: affinity purified by Protein A		Subcellular Location: Secreted
Concentration: 1mg/ml		
Storage: 0.01M TBS (pH7.4) with 1% BSA, 0.02% Proclin300 and 50% Glycerol. Shipped at 4°C. Store at -20°C for one year. Avoid repeated freeze/thaw cycles.		
Background: Immediate-early protein likely to play a role in cell growth regulation.1400RWJ		

— VALIDATION IMAGES —



Sample: 293T Cell (Human) Lysate at 30 ug
Primary: Anti- IGFBP9 (bs-6059R) at 1/300
dilution Secondary: IRDye800CW Goat Anti-
Rabbit IgG at 1/20000 dilution Predicted band
size: 35kD Observed band size: 45kD



Sample: Lane 1: Kidney (Mouse) Lysate at 40 ug
Lane 2: Cerebrum (Mouse) Lysate at 40 ug Lane
3: Cerebrum (Rat) Lysate at 40 ug Primary: Anti-
IGFBP9 (bs-6059R) at 1/1000 dilution Secondary:
IRDye800CW Goat Anti-Rabbit IgG at 1/20000
dilution Predicted band size: 48 kD Observed
band size: 48 kD