

bs-24324R

[Primary Antibody]

UBE2Q1 Rabbit pAb

Bioss
ANTIBODIES

www.bioss.com.cn

sales@bioss.com.cn

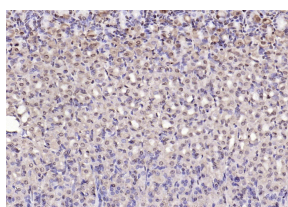
techsupport@bioss.com.cn

400-901-9800

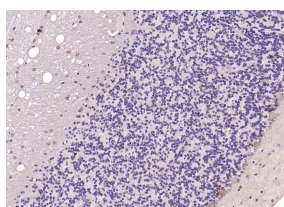
— DATASHEET —

Host: Rabbit	Isotype: IgG	Applications: IHC-P (1:400-800) IHC-F (1:400-800) IF (1:100-500) Reactivity: Mouse, Rat (predicted: Human, Rabbit, Pig, Sheep, Cow, Dog, Horse) Predicted MW.: 46 kDa
Clonality: Polyclonal		
Target: UBE2Q1		
Immunogen: KLH conjugated synthetic peptide derived from human UBE2Q1: 171-270/422.		
Purification: affinity purified by Protein A		
Concentration: 1mg/ml		
Storage: 0.01M TBS (pH7.4) with 1% BSA, 0.02% Proclin300 and 50% Glycerol. Shipped at 4°C. Store at -20°C for one year. Avoid repeated freeze/thaw cycles.		

— VALIDATION IMAGES —



Paraformaldehyde-fixed, paraffin embedded (mouse stomach); Antigen retrieval by boiling in sodium citrate buffer (pH6.0) for 15min; Block endogenous peroxidase by 3% hydrogen peroxide for 20 minutes; Blocking buffer (normal goat serum) at 37°C for 30min; Antibody incubation with (UBE2Q1) Polyclonal Antibody, Unconjugated (bs-24324R) at 1:200 overnight at 4°C, followed by operating according to SP Kit(Rabbit) (sp-0023) instructions and DAB staining.



Paraformaldehyde-fixed, paraffin embedded (rat cerebellum); Antigen retrieval by boiling in sodium citrate buffer (pH6.0) for 15min; Block endogenous peroxidase by 3% hydrogen peroxide for 20 minutes; Blocking buffer (normal goat serum) at 37°C for 30min; Antibody incubation with (UBE2Q1) Polyclonal Antibody, Unconjugated (bs-24324R) at 1:200 overnight at 4°C, followed by operating according to SP Kit(Rabbit) (sp-0023) instructions and DAB staining.

— SELECTED CITATIONS —

- **[IF=3.269]** Fanqi Meng. et al. LncRNA LINC00525 activates HIF-1 α through miR-338-3p / UBE2Q1 / β -catenin axis to regulate the Warburg effect in colorectal cancer. Bioengineered. 2022;13(2):2552-2565 IF, WB ; Human. 35156520